

## GEMIN6 antibody

### Product Information

Catalog No.:	FNab03421
Size:	100µg
Form:	liquid
Purification:	Immunogen affinity purified
Purity:	≥95% as determined by SDS-PAGE
Host:	Rabbit
Clonality:	polyclonal
Clone ID:	None
IsoType:	IgG
Storage:	PBS with 0.02% sodium azide and 50% glycerol pH 7.3, -20°C for 12 months(Avoid repeated freeze / thaw cycles.)

### Background

The SMN complex plays a catalyst role in the assembly of small nuclear ribonucleoproteins(snRNPs), the building blocks of the spliceosome. Thereby, plays an important role in the splicing of cellular pre-mRNAs. Most spliceosomal snRNPs contain a common set of Sm proteins SNRPB, SNRPD1, SNRPD2, SNRPD3, SNRPE, SNRPF and SNRPG that assemble in a heptameric protein ring on the Sm site of the small nuclear RNA to form the core snRNP. In the cytosol, the Sm proteins SNRPD1, SNRPD2, SNRPE, SNRPF and SNRPG are trapped in an inactive 6S pICln-Sm complex by the chaperone CLNS1A that controls the assembly of the core snRNP. Dissociation by the SMN complex of CLNS1A from the trapped Sm proteins and their transfer to an SMN-Sm complex triggers the assembly of core snRNPs and their transport to the nucleus.

### Immunogen information

Immunogen:	gem(nuclear organelle) associated protein 6
Synonyms:	Gem-associated protein 6 (Gemin-6) SIP2 GEMIN6
Observed MW:	19 kDa
Uniprot ID :	Q8WXD5

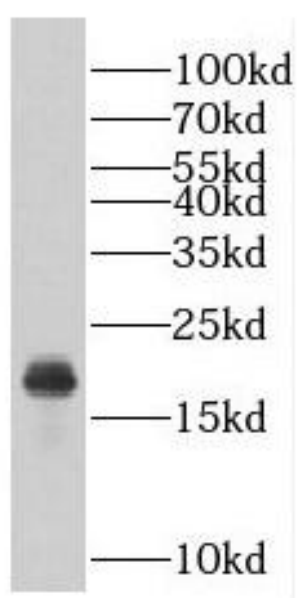
### Application

Reactivity:	Human, Mouse, Rat
-------------	-------------------

Tested Application: ELISA, WB

Recommended dilution: WB: 1:500-1:2000

Image:



HEK-293 cells were subjected to SDS PAGE followed by western blot with FNab03421(GEMIN6 antibody) at dilution of 1:300