

GEMIN5 antibody

Product Information

Catalog No.:	FNab03420
Size:	100µg
Form:	liquid
Purification:	Immunogen affinity purified
Purity:	≥95% as determined by SDS-PAGE
Host:	Rabbit
Clonality:	polyclonal
Clone ID:	None
IsoType:	IgG
Storage:	PBS with 0.02% sodium azide and 50% glycerol pH 7.3, -20°C for 12 months(Avoid repeated freeze / thaw cycles.)

Background

The SMN complex plays a catalyst role in the assembly of small nuclear ribonucleoproteins(snRNPs), the building blocks of the spliceosome. Thereby, plays an important role in the splicing of cellular pre-mRNAs. Most spliceosomal snRNPs contain a common set of Sm proteins SNRPB, SNRPD1, SNRPD2, SNRPD3, SNRPE, SNRPF and SNRPG that assemble in a heptameric protein ring on the Sm site of the small nuclear RNA to form the core snRNP. In the cytosol, the Sm proteins SNRPD1, SNRPD2, SNRPE, SNRPF and SNRPG are trapped in an inactive 6S pICln-Sm complex by the chaperone CLNS1A that controls the assembly of the core snRNP. Dissociation by the SMN complex of CLNS1A from the trapped Sm proteins and their transfer to an SMN-Sm complex triggers the assembly of core snRNPs and their transport to the nucleus. GEMIN5 acts as the snRNA-binding protein of the SMN complex.

Immunogen information

Immunogen:	gem(nuclear organelle) associated protein 5
Synonyms:	Gem-associated protein 5 (Gemin5) GEMIN5
Observed MW:	168 kDa
Uniprot ID :	Q8TEQ6

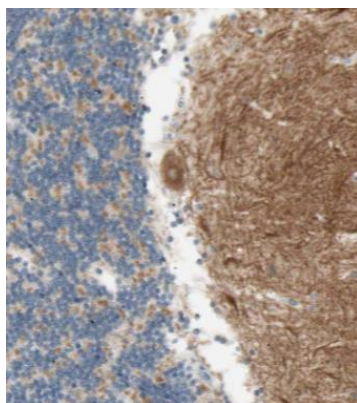
Application

Reactivity:	Human
-------------	-------

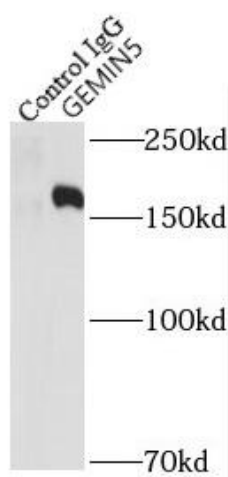
Tested Application: ELISA, WB, IP, IF, IHC

Recommended dilution: WB: 1:500-1:3000; IP: 1:500-1:2000; IHC: 1:20-1:200; IF: 1:10-1:100

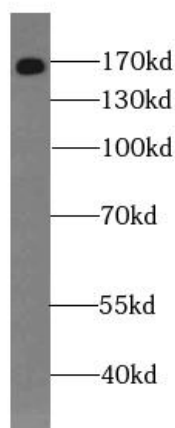
Image:



Immunohistochemistry of paraffin-embedded human cerebellum tissue slide using FNab03420(GEMIN5 Antibody) at dilution of 1:50



IP Result of anti-GEMIN5 (IP:FNab03420, 5ug; Detection:FNab03420 1:1000) with HeLa cells lysate 220ug.



Jurkat cells were subjected to SDS PAGE followed by western blot with FNab03420(GEMIN5 Antibody) at dilution of 1:1500