

GATM antibody

Product Information

| | |
|---------------|---|
| Catalog No.: | FNab03368 |
| Size: | 100µg |
| Form: | liquid |
| Purification: | Immunogen affinity purified |
| Purity: | ≥95% as determined by SDS-PAGE |
| Host: | Rabbit |
| Clonality: | polyclonal |
| Clone ID: | None |
| IsoType: | IgG |
| Storage: | PBS with 0.02% sodium azide and 50% glycerol pH 7.3, -20°C for 12 months (Avoid repeated freeze / thaw cycles.) |

Background

This gene encodes a mitochondrial enzyme that belongs to the amidinotransferase family. This enzyme is involved in creatine biosynthesis, whereby it catalyzes the transfer of a guanido group from L-arginine to glycine, resulting in guanidinoacetic acid, the immediate precursor of creatine. Mutations in this gene cause arginine:glycine amidinotransferase deficiency, an inborn error of creatine synthesis characterized by mental retardation, language impairment, and behavioral disorders.

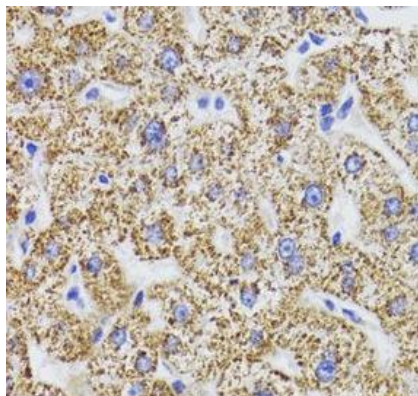
Immunogen information

| | |
|--------------|--|
| Immunogen: | glycine amidinotransferase (L-arginine:glycine amidinotransferase) |
| Synonyms: | Glycine amidinotransferase, mitochondrial L-arginine:glycine amidinotransferase Transamidinase GATM AGAT |
| Observed MW: | 43 kDa |
| Uniprot ID : | P50440 |

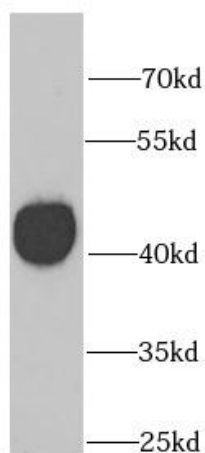
Application

| | |
|-----------------------|---|
| Reactivity: | Human, Mouse, Rat |
| Tested Application: | ELISA, WB, IHC, IF |
| Recommended dilution: | WB: 1:500 - 1:2000; IHC: 1:50 - 1:200; IF: 1:50 - 1:200 |

Image:



Immunohistochemistry of paraffin-embedded human liver using FNab03368(GATM antibody) at dilution of 1:100



mouse kidney tissue were subjected to SDS PAGE followed by western blot with FNab03368(GATM antibody) at dilution of 1:1000