

CTH antibody

Product Information

Catalog No.:	FNab03335
Size:	100µg
Form:	liquid
Purification:	Immunogen affinity purified
Purity:	≥95% as determined by SDS-PAGE
Host:	Rabbit
Clonality:	polyclonal
Clone ID:	None
IsoType:	IgG
Storage:	PBS with 0.02% sodium azide and 50% glycerol pH 7.3, -20°C for 12 months(Avoid repeated freeze / thaw cycles.)

Background

This gene encodes a cytoplasmic enzyme in the trans-sulfuration pathway that converts cystathione derived from methionine into cysteine. Glutathione synthesis in the liver is dependent upon the availability of cysteine. Mutations in this gene cause cystathioninuria. Alternative splicing of this gene results in three transcript variants encoding different isoforms. This antibody is a rabbit polyclonal antibody raised against residues near the C terminus of human CTH.

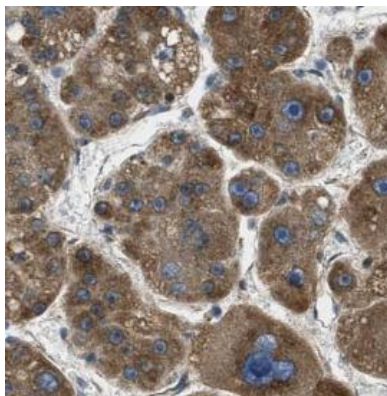
Immunogen information

Immunogen:	cystathionase(cystathionine gamma-lyase)
Synonyms:	Cystathionine gamma-lyase (CGL, CSE) Cysteine desulfhydrase Cysteine-protein sulfhydrase Gamma-cystathionase Homocysteine desulfhydrase CTH
Observed MW:	45 kDa
Uniprot ID :	P32929

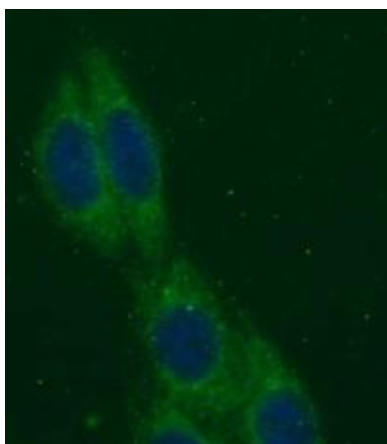
Application

Reactivity:	Human, Mouse, Rat
Tested Application:	ELISA, IHC, IP, WB, FC
Recommended dilution:	WB: 1:1000-1:4000; IP: 1:500-1:2000; IHC: 1:100-1:400; IF: 1:50-1:500

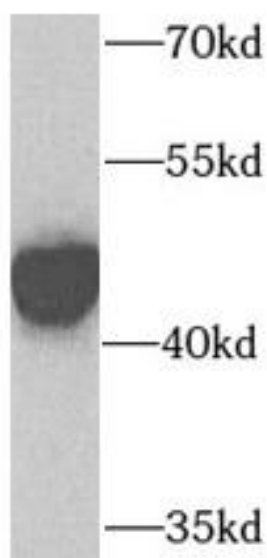
Image:



Immunohistochemistry of paraffin-embedded human liver cancer tissue slide using FNab03335(CSE Antibody) at dilution of 1:200



Immunofluorescent analysis of (-20°C Ethanol) fixed HepG2 cells using FNab03335 (Gamma cystathionase antibody) at dilution of 1:50 and Alexa Fluor 488-conjugated Goat Anti-Rabbit IgG(H+L)



mouse liver tissue were subjected to SDS PAGE followed by western blot with FNab03335(CSE antibody) at dilution of 1:1000