

FURIN antibody

Product Information

Catalog No.:	FNab03241
Size:	100µg
Form:	liquid
Purification:	Immunogen affinity purified
Purity:	≥95% as determined by SDS-PAGE
Host:	Rabbit
Clonality:	polyclonal
Clone ID:	None
IsoType:	IgG
Storage:	PBS with 0.02% sodium azide and 50% glycerol pH 7.3, -20°C for 12 months (Avoid repeated freeze / thaw cycles.)

Background

This gene encodes a member of the subtilisin-like proprotein convertase family, which includes proteases that process protein and peptide precursors trafficking through regulated or constitutive branches of the secretory pathway. It encodes a type 1 membrane bound protease that is expressed in many tissues, including neuroendocrine, liver, gut, and brain. The encoded protein undergoes an initial autocatalytic processing event in the ER and then sorts to the trans-Golgi network through endosomes where a second autocatalytic event takes place and the catalytic activity is acquired. The product of this gene is one of the seven basic amino acid-specific members which cleave their substrates at single or paired basic residues. Some of its substrates include parathyroid hormone, transforming growth factor beta 1 precursor, proalbumin, pro-beta-secretase, membrane type-1 matrix metalloproteinase, beta subunit of pro-nerve growth factor and von Willebrand factor. It is also thought to be one of the proteases responsible for the activation of HIV envelope glycoproteins gp160 and gp140 and may play a role in tumor progression. This gene is located in close proximity to family member proprotein convertase subtilisin/kexin type 6 and upstream of the FES oncogene. Alternative splicing results in multiple transcript variants.

Immunogen information

Immunogen:	furin (paired basic amino acid cleaving enzyme)
Synonyms:	Furin Dibasic-processing enzyme Paired basic amino acid residue-cleaving enzyme (PACE) FURIN FUR PACE PCSK3
Observed MW:	86 kDa

Uniprot ID : P09958

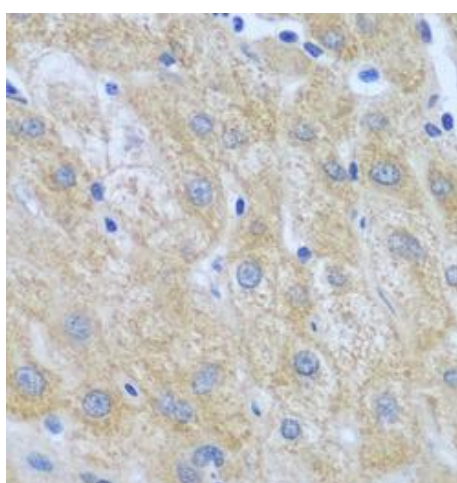
Application

Reactivity: Human, Mouse

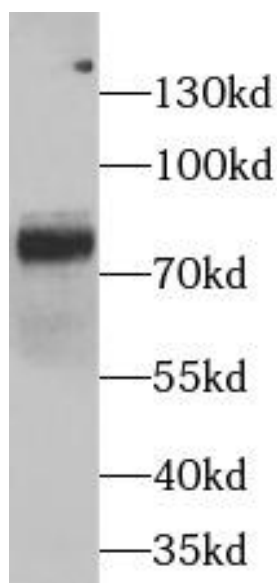
Tested Application: ELISA, WB, IHC

Recommended dilution: WB: 1:500 - 1:2000; IHC: 1:50 - 1:200

Image:



Immunohistochemistry of paraffin-embedded human liver cancer slide using FNab03241(FURIN Antibody) at dilution of 1:100



HeLa cells were subjected to SDS PAGE followed by western blot with FNab03241(FURIN Antibody) at dilution of 1:1000