

## FBXW11 antibody

### Product Information

Catalog No.:	FNab03052
Size:	100µg
Form:	liquid
Purification:	Immunogen affinity purified
Purity:	≥95% as determined by SDS-PAGE
Host:	Rabbit
Clonality:	polyclonal
Clone ID:	None
IsoType:	IgG
Storage:	PBS with 0.02% sodium azide and 50% glycerol pH 7.3, -20°C for 12 months(Avoid repeated freeze / thaw cycles.)

### Background

Substrate recognition component of a SCF(SKP1-CUL1-F-box protein) E3 ubiquitin-protein ligase complex which mediates the ubiquitination and subsequent proteasomal degradation of target proteins. Probably recognizes and binds to phosphorylated target proteins. SCF(FBXW11) mediates the ubiquitination of phosphorylated CTNNB1 and participates in Wnt signaling. SCF(FBXW11) mediates the ubiquitination of phosphorylated NFKB1A, which degradation frees the associated NFKB1 to translocate into the nucleus and to activate transcription. SCF(FBXW11) mediates the ubiquitination of IFNAR1. SCF(FBXW11) mediates the ubiquitination of CEP68; this is required for centriole separation during mitosis(PubMed:25503564). Involved in the oxidative stress-induced a ubiquitin-mediated decrease in RCAN1. Mediates the degradation of CDC25A induced by ionizing radiation in cells progressing through S phase and thus may function in the intra-S-phase checkpoint. Has an essential role in the control of the clock-dependent transcription via degradation of phosphorylated PER1 and phosphorylated PER2. Is target of human immunodeficiency virus type 1(HIV-1) protein VPU to polyubiquitinate and deplete BST2 from cells and antagonize its antiviral action.

### Immunogen information

Immunogen:	F-box and WD repeat domain containing 11
Synonyms:	F-box/WD repeat-containing protein 11 F-box and WD repeats protein beta-TrCP2 F-box/WD repeat-containing protein 1B Homologous to Slimb protein (HOS) FBXW11 BTRCP2 FBW1B FBXW1B KIAA0696

Observed MW: 61 kDa  
Uniprot ID : Q9UKB1

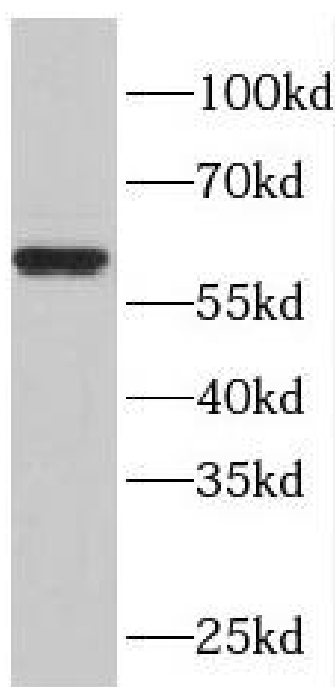
### Application

Reactivity: Human, Mouse, Rat

Tested Application: ELISA, WB

Recommended dilution: WB: 1:500-1:2000

Image:



SGC-7901 cells were subjected to SDS PAGE followed by western blot with FNab03052(FBXW11 antibody) at dilution of 1:2000