

## FAM20C antibody

### Product Information

Catalog No.:	FNab02979
Size:	100µg
Form:	liquid
Purification:	Immunogen affinity purified
Purity:	≥95% as determined by SDS-PAGE
Host:	Rabbit
Clonality:	polyclonal
Clone ID:	None
IsoType:	IgG
Storage:	PBS with 0.02% sodium azide and 50% glycerol pH 7.3, -20°C for 12 months(Avoid repeated freeze / thaw cycles.)

### Background

Golgi serine/threonine protein kinase that phosphorylates secretory pathway proteins within Ser-x-Glu/pSer motifs and plays a key role in biomineralization of bones and teeth(PubMed:22582013, PubMed:23754375, PubMed:25789606). Constitutes the main protein kinase for extracellular proteins, generating the majority of the extracellular phosphoproteome(PubMed:26091039). Mainly phosphorylates proteins within the Ser-x-Glu/pSer motif, but also displays a broader substrate specificity(PubMed:26091039). Phosphorylates casein as well as a number of proteins involved in biomineralization such as AMELX, AMTN, ENAM and SPP1(PubMed:22582013, PubMed:25789606). In addition to its role in biomineralization, also plays a role in lipid homeostasis, wound healing and cell migration and adhesion(PubMed:26091039).

### Immunogen information

Immunogen:	family with sequence similarity 20, member C
Synonyms:	Extracellular serine/threonine protein kinase FAM20C Dentin matrix protein 4 (DMP-4) Golgi casein kinase Golgi-enriched fraction casein kinase (GEF-CK) FAM20C DMP4
Observed MW:	50 kDa
Uniprot ID :	Q8IXL6

### Application

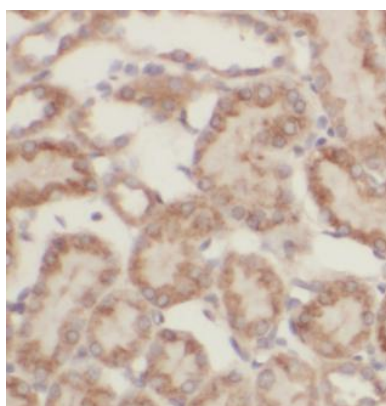


Reactivity: Human, Mouse, Rat

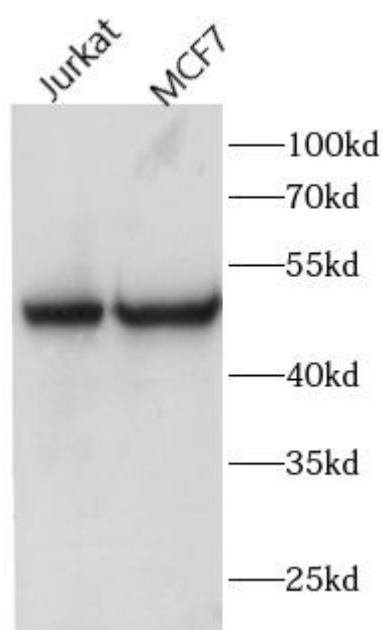
Tested Application: ELISA, WB, IHC

Recommended dilution: WB: 1:500-1:2000; IHC: 1:20-1:200

Image:



Immunohistochemistry of paraffin-embedded human kidney tissue slide using FNab02979(FAM20C Antibody) at dilution of 1:50



various lysates were subjected to SDS PAGE followed by western blot with FNab02979(FAM20C Antibody) at dilution of 1:600