

EXOSC5 antibody

Product Information

Catalog No.:	FNab02905
Size:	100µg
Form:	liquid
Purification:	Immunogen affinity purified
Purity:	≥95% as determined by SDS-PAGE
Host:	Rabbit
Clonality:	polyclonal
Clone ID:	None
IsoType:	IgG
Storage:	PBS with 0.02% sodium azide and 50% glycerol pH 7.3, -20°C for 12 months(Avoid repeated freeze / thaw cycles.)

Background

Non-catalytic component of the RNA exosome complex which has 3'→5' exoribonuclease activity and participates in a multitude of cellular RNA processing and degradation events. In the nucleus, the RNA exosome complex is involved in proper maturation of stable RNA species such as rRNA, snRNA and snoRNA, in the elimination of RNA processing by-products and non-coding 'pervasive' transcripts, such as antisense RNA species and promoter-upstream transcripts(PROMPTs), and of mRNAs with processing defects, thereby limiting or excluding their export to the cytoplasm. The RNA exosome may be involved in Ig class switch recombination(CSR) and/or Ig variable region somatic hypermutation(SHM) by targeting AICDA deamination activity to transcribed dsDNA substrates. In the cytoplasm, the RNA exosome complex is involved in general mRNA turnover and specifically degrades inherently unstable mRNAs containing AU-rich elements(AREs) within their 3' untranslated regions, and in RNA surveillance pathways, preventing translation of aberrant mRNAs. It seems to be involved in degradation of histone mRNA. The catalytic inactive RNA exosome core complex of 9 subunits(Exo-9) is proposed to play a pivotal role in the binding and presentation of RNA for ribonucleolysis, and to serve as a scaffold for the association with catalytic subunits and accessory proteins or complexes.

Immunogen information

Immunogen:	exosome component 5
Synonyms:	Exosome complex component RRP46 Chronic myelogenous leukemia tumor antigen 28 Exosome component 5 Ribosomal RNA-processing protein 46 p12B EXOSC5 CML28 RRP46

Observed MW: 28-30 kDa

Uniprot ID : Q9NQY4

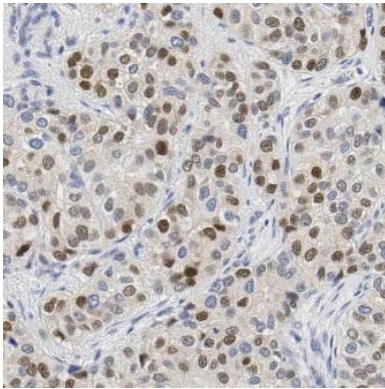
Application

Reactivity: Human, Rat

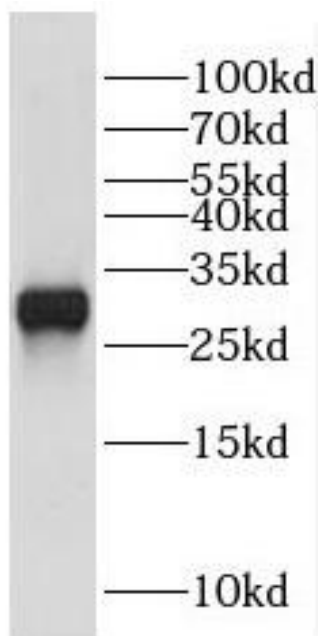
Tested Application: ELISA, WB, IHC

Recommended dilution: WB: 1:500-1:2000; IHC: 1:20-1:200

Image:



Immunohistochemistry of paraffin-embedded human breast cancer using FNab02905(EXOSC5 antibody) at dilution of 1:50



K-562 cells were subjected to SDS PAGE followed by western blot with FNab02905(EXOSC5 antibody) at dilution of 1:500