

EVL antibody

Product Information

Catalog No.:	FNab02887
Size:	100µg
Form:	liquid
Purification:	Immunogen affinity purified
Purity:	≥95% as determined by SDS-PAGE
Host:	Rabbit
Clonality:	polyclonal
Clone ID:	None
IsoType:	IgG
Storage:	PBS with 0.02% sodium azide and 50% glycerol pH 7.3, -20°C for 12 months(Avoid repeated freeze / thaw cycles.)

Background

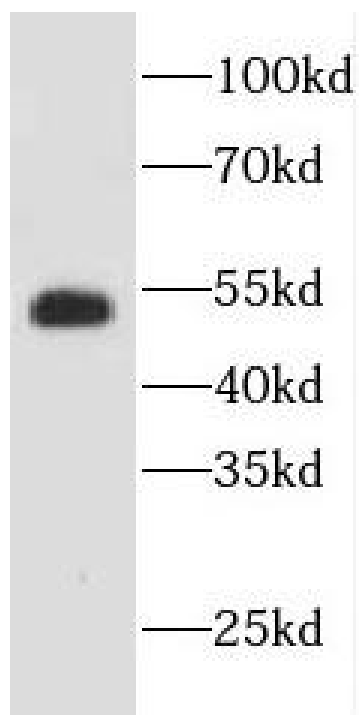
Ena/VASP proteins are actin-associated proteins involved in a range of processes dependent on cytoskeleton remodeling and cell polarity such as axon guidance and lamellipodial and filopodial dynamics in migrating cells. EVL enhances actin nucleation and polymerization.

Immunogen information

Immunogen:	Enah/Vasp-like
Synonyms:	Ena/VASP-like protein Ena/vasodilator-stimulated phosphoprotein-like EVL RNB6
Observed MW:	50 kDa
Uniprot ID :	Q9UI08

Application

Reactivity:	Human, Mouse, Rat
Tested Application:	ELISA, WB
Recommended dilution:WB:	1:500-1:2000
Image:	



Jurkat cells were subjected to SDS PAGE followed by western blot with FNab02887(EVL antibody) at dilution of 1:200