

SELE antibody

Product Information

Catalog No.:	FNab02863
Size:	100µg
Form:	liquid
Purification:	Immunogen affinity purified
Purity:	≥95% as determined by SDS-PAGE
Host:	Rabbit
Clonality:	polyclonal
Clone ID:	None
IsoType:	IgG
Storage:	PBS with 0.02% sodium azide and 50% glycerol pH 7.3, -20°C for 12 months(Avoid repeated freeze / thaw cycles.)

Background

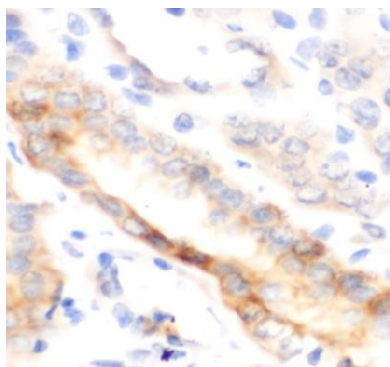
None

Immunogen information

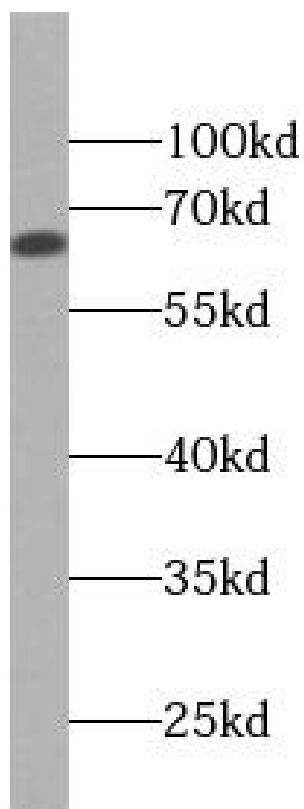
Immunogen:	selectin E
Synonyms:	E-selectin CD62 antigen-like family member E Endothelial leukocyte adhesion molecule 1 (ELAM-1) Leukocyte-endothelial cell adhesion molecule 2 (LECAM2) SELE ELAM1
Observed MW:	67 kDa
Uniprot ID :	P16581

Application

Reactivity:	Human, Mouse, Rat
Tested Application:	ELISA, WB, IHC
Recommended dilution:	WB: 1:200-1:2000; IHC: 1:50 - 1:200
Image:	



Immunohistochemistry of paraffin-embedded Human kidney using FNab02863(E-selectin antibody) at dilution of 1:100



Jurkat cells were subjected to SDS PAGE followed by western blot with FNab02863(E-selectin antibody) at dilution of 1:300