

ERP29 antibody

Product Information

Catalog No.:	FNab02857
Size:	100µg
Form:	liquid
Purification:	Immunogen affinity purified
Purity:	≥95% as determined by SDS-PAGE
Host:	Rabbit
Clonality:	polyclonal
Clone ID:	None
IsoType:	IgG
Storage:	PBS with 0.02% sodium azide and 50% glycerol pH 7.3, -20°C for 12 months(Avoid repeated freeze / thaw cycles.)

Background

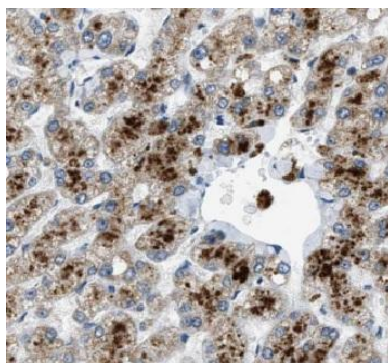
Does not seem to be a disulfide isomerase. Plays an important role in the processing of secretory proteins within the endoplasmic reticulum(ER), possibly by participating in the folding of proteins in the ER.

Immunogen information

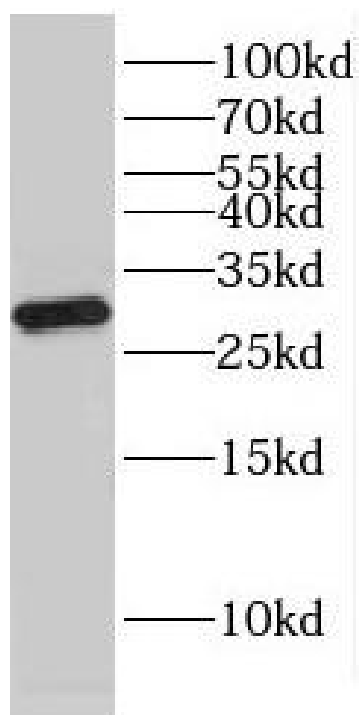
Immunogen:	endoplasmic reticulum protein 29
Synonyms:	Endoplasmic reticulum resident protein 29 (ERp29) Endoplasmic reticulum resident protein 28 (ERp28) Endoplasmic reticulum resident protein 31 (ERp31) ERP29 C12orf8 ERP28
Observed MW:	29 kDa
Uniprot ID :	P30040

Application

Reactivity:	Human, Mouse, Rat
Tested Application:	ELISA, WB, IHC, IF
Recommended dilution:	WB: 1:500-1:2000; IHC: 1:20-1:200; IF: 1:20-1:200
Image:	



Immunohistochemistry of paraffin-embedded human liver slide using FNab02857(ERP29 Antibody) at dilution of 1:50



mouse liver tissue were subjected to SDS PAGE followed by western blot with FNab02857(ERP29 Antibody) at dilution of 1:1000