

ERMP1 antibody

Product Information

Catalog No.:	FNab02851
Size:	100µg
Form:	liquid
Purification:	Immunogen affinity purified
Purity:	≥95% as determined by SDS-PAGE
Host:	Rabbit
Clonality:	polyclonal
Clone ID:	None
IsoType:	IgG
Storage:	PBS with 0.02% sodium azide and 50% glycerol pH 7.3, -20°C for 12 months(Avoid repeated freeze / thaw cycles.)

Background

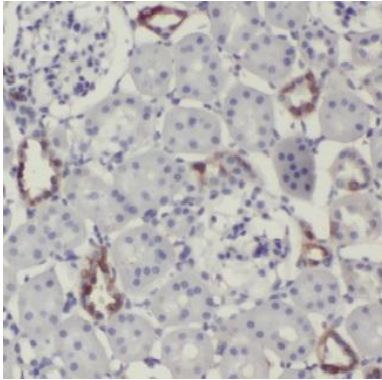
Within the ovary, required for the organization of somatic cells and oocytes into discrete follicular structures.

Immunogen information

Immunogen:	endoplasmic reticulum metalloproteinase 1
Synonyms:	Endoplasmic reticulum metalloproteinase 1 Felix- ina ERMP1 FXNA KIAA1815
Observed MW:	None
Uniprot ID :	Q7Z2K6

Application

Reactivity:	Human, Mouse, Rat
Tested Application:	ELISA, IHC
Recommended dilution:	IHC: 1:20-1:200
Image:	



Immunohistochemistry of paraffin-embedded human Kidney using FNab02851(ERMP1 antibody) at dilution of 1:100