

ERK1/2 antibody

Product Information

Catalog No.:	FNab02846
Size:	100µg
Form:	liquid
Purification:	Immunogen affinity purified
Purity:	≥95% as determined by SDS-PAGE
Host:	Rabbit
Clonality:	polyclonal
Clone ID:	None
IsoType:	IgG
Storage:	PBS with 0.02% sodium azide and 50% glycerol pH 7.3, -20°C for 12 months(Avoid repeated freeze / thaw cycles.)

Background

ERK1 and ERK2 belongs to the protein kinase superfamily. It is involved in both the initiation and regulation of meiosis, mitosis, and postmitotic functions in differentiated cells by phosphorylating a number of transcription factors such as ELK-1. ERK1/2 catalized the reaction: ATP + a protein = ADP + a phosphoprotein. It is activated by tyrosine phosphorylation in response to insulin and NGF. This antibody can recognize both ERK1 and ERK2 with the molecular mass of 38-44 kDa.

Immunogen information

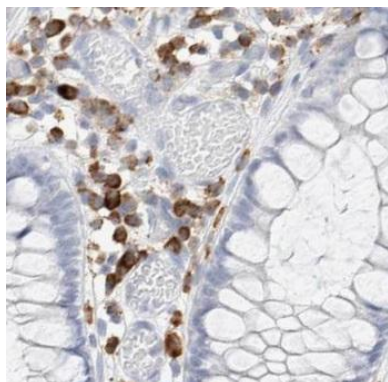
Immunogen:	mitogen-activated protein kinase 1
Synonyms:	Mitogen-activated protein kinase 1 (MAP kinase 1, MAPK 1) ERT1 Extracellular signal-regulated kinase 2 (ERK-2) MAP kinase isoform p42 (p42-MAPK) Mitogen-activated protein kinase 2 (MAP kinase 2, MAPK 2) MAPK1 ERK2 PRKM1 PRKM2
Observed MW:	38-44 kDa
Uniprot ID :	P28482

Application

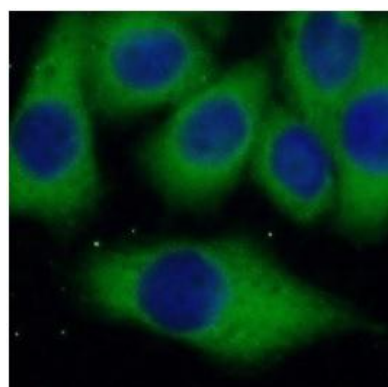
Reactivity:	Human, Mouse, Rat
Tested Application:	ELISA, WB, IHC, IF

Recommended dilution: WB: 1:500-1:3000; IHC: 1:50-1:500; IF: 1:10-1:100

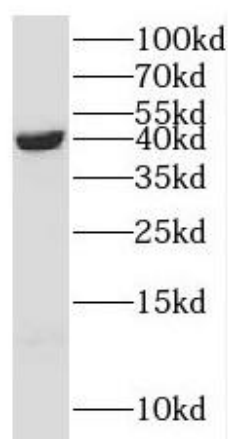
Image:



Immunohistochemistry of paraffin-embedded human colon cancer tissue slide using FNab02846(ERK1/2 Antibody) at dilution of 1:200 heat mediated antigen retrieved with Tris-EDTA buffer(pH9).



Immunofluorescent analysis of HeLa cells, using FNab02846(ERK1/2 Antibody) at 1:25 dilution. Blue pseudocolor = DAPI (fluorescent DNA dye).



HeLa cells were subjected to SDS PAGE followed by western blot with FNab02846(ERK1/2 antibody) at dilution of 1:1000