

ERGIC2 antibody

Product Information

| | |
|---------------|---|
| Catalog No.: | FNab02840 |
| Size: | 100µg |
| Form: | liquid |
| Purification: | Immunogen affinity purified |
| Purity: | ≥95% as determined by SDS-PAGE |
| Host: | Rabbit |
| Clonality: | polyclonal |
| Clone ID: | None |
| IsoType: | IgG |
| Storage: | PBS with 0.02% sodium azide and 50% glycerol pH 7.3, -20°C for 12 months (Avoid repeated freeze / thaw cycles.) |

Background

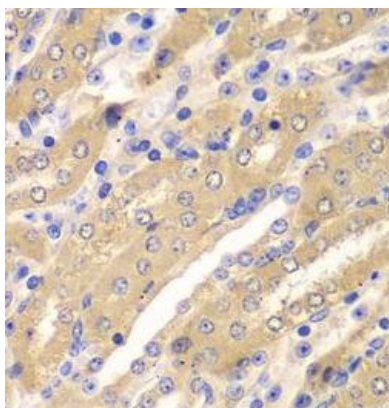
ERGIC2, or PTX1, is a ubiquitously expressed nuclear protein that is downregulated in prostate carcinoma (Kwok et al., 2001 [PubMed 11445006]).

Immunogen information

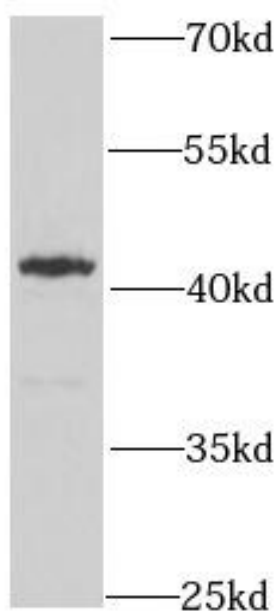
| | |
|--------------|--|
| Immunogen: | ERGIC and golgi 2 |
| Synonyms: | Endoplasmic reticulum-Golgi intermediate compartment protein 2 ERGIC2 ERV41 PTX1 |
| Observed MW: | 43 kDa |
| Uniprot ID : | Q96RQ1 |

Application

| | |
|-----------------------|---------------------------------------|
| Reactivity: | Human, Mouse |
| Tested Application: | ELISA, WB, IHC |
| Recommended dilution: | WB: 1:500 - 1:2000; IHC: 1:50 - 1:200 |
| Image: | |



Immunohistochemistry of paraffin-embedded mouse kidney using FNab02840(ERGIC2 antibody) at dilution of 1:50



HepG2 cells were subjected to SDS PAGE followed by western blot with FNab02840(ERGIC2 antibody) at dilution of 1:1000