

ERAL1 antibody

Product Information

Catalog No.:	FNab02825
Size:	100µg
Form:	liquid
Purification:	Immunogen affinity purified
Purity:	≥95% as determined by SDS-PAGE
Host:	Rabbit
Clonality:	polyclonal
Clone ID:	None
IsoType:	IgG
Storage:	PBS with 0.02% sodium azide and 50% glycerol pH 7.3, -20°C for 12 months(Avoid repeated freeze / thaw cycles.)

Background

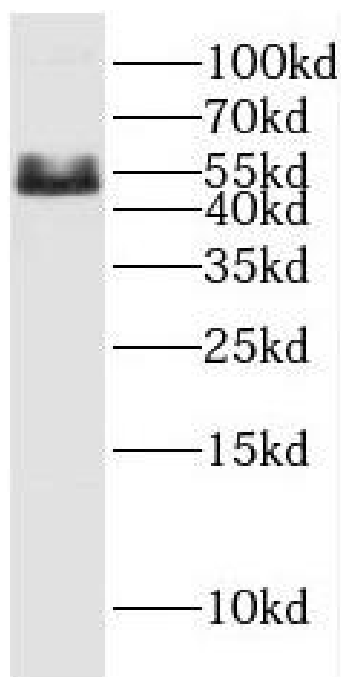
Probable GTPase that plays a role in the mitochondrial ribosomal small subunit assembly. Specifically binds the 12S mitochondrial rRNA(12S mt-rRNA) to a 33 nucleotide section delineating the 3' terminal stem-loop region. May act as a chaperone that protects the 12S mt-rRNA on the 28S mitoribosomal subunit during ribosomal small subunit assembly.

Immunogen information

Immunogen:	Era G-protein-like 1(E. coli)
Synonyms:	GTPase Era, mitochondrial (H-ERA, hERA) Conserved ERA-like GTPase (CEGA) ERA-W ERA-like protein 1 ERAL1 HERA
Observed MW:	50-52 kDa
Uniprot ID :	O75616

Application

Reactivity:	Human, Mouse, Rat
Tested Application:	ELISA, WB
Recommended dilution: WB:	1:500-1:2000
Image:	



Jurkat cells were subjected to SDS PAGE followed by western blot with FNab02825(ERAL1 Antibody) at dilution of 1:1000