

## EPHA1-specific antibody

### Product Information

|               |  |
|---------------|--|
| Catalog No.:  | FNab02801  |
| Size:         | 100µg  |
| Form:         | liquid   |
| Purification: | Immunogen affinity purified  |
| Purity:       | ≥95% as determined by SDS-PAGE   |
| Host:         | Rabbit   |
| Clonality:    | polyclonal   |
| Clone ID:     | None   |
| IsoType:      | IgG  |
| Storage:      | PBS with 0.02% sodium azide and 50% glycerol pH 7.3, -20°C for 12 months(Avoid repeated freeze / thaw cycles.) |

### Background

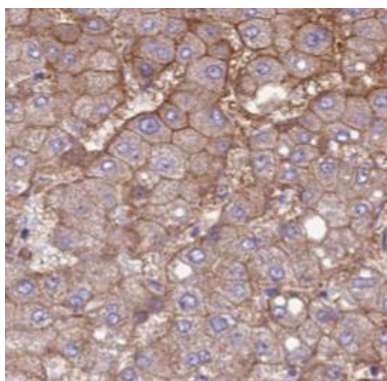
None

### Immunogen information

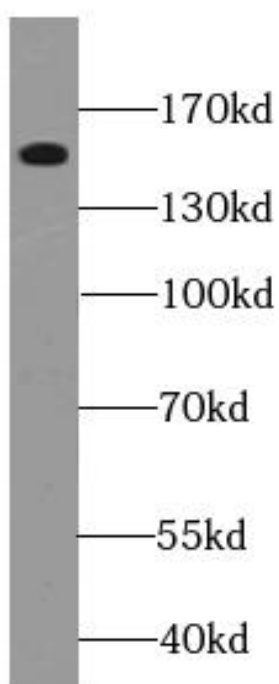
|              |  |
|--------------|--|
| Immunogen:   | EPH receptor A1  |
| Synonyms:    | Ephrin type-A receptor 1 (hEpha1) EPH tyrosine kinase EPH tyrosine kinase 1 Erythropoietin-producing hepatoma receptor Tyrosine-protein kinase receptor EPH EPHA1 EPH EPHT EPHT1 |
| Observed MW: | 150 kDa  |
| Uniprot ID : | P21709   |

### Application

|                       |   |
|-----------------------|---|
| Reactivity:           | Human, Mouse  |
| Tested Application:   | ELISA, WB, IHC, IF, IP  |
| Recommended dilution: | WB: 1:500-1:2000; IP: 1:500-1:1000; IHC: 1:20-1:200; IF: 1:50-1:500 |
| Image:                |   |



Immunohistochemistry of paraffin-embedded human liver cancer using FNab02801(EPHA1-special antibody) at dilution of 1:100



A549 cells were subjected to SDS PAGE followed by western blot with FNab02801(EPHA1-special antibody) at dilution of 1:800