

ENSA antibody

Product Information

Catalog No.:	FNab02777
Size:	100µg
Form:	liquid
Purification:	Immunogen affinity purified
Purity:	≥95% as determined by SDS-PAGE
Host:	Rabbit
Clonality:	polyclonal
Clone ID:	None
IsoType:	IgG
Storage:	PBS with 0.02% sodium azide and 50% glycerol pH 7.3, -20°C for 12 months(Avoid repeated freeze / thaw cycles.)

Background

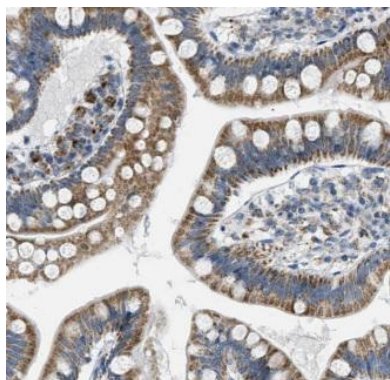
Protein phosphatase inhibitor that specifically inhibits protein phosphatase 2A(PP2A) during mitosis. When phosphorylated at Ser-67 during mitosis, specifically interacts with PPP2R2D(PR55-delta) and inhibits its activity, leading to inactivation of PP2A, an essential condition to keep cyclin-B1-CDK1 activity high during M phase(By similarity). Also acts as a stimulator of insulin secretion by interacting with sulfonylurea receptor(ABCC8), thereby preventing sulfonylurea from binding to its receptor and reducing K(ATP) channel currents.

Immunogen information

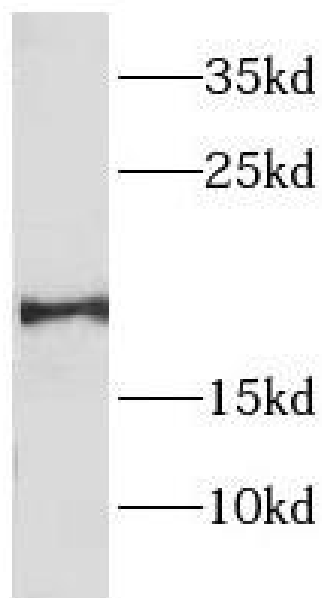
Immunogen:	endosulfine alpha
Synonyms:	Alpha-endosulfine ARPP-19e ENSA
Observed MW:	19 kDa
Uniprot ID :	O43768

Application

Reactivity:	Human, Mouse, Rat
Tested Application:	ELISA, WB, IHC
Recommended dilution:	WB: 1:500-1:2000; IHC: 1:20-1:200
Image:	



Immunohistochemistry of paraffin-embedded human small intestine tissue slide using FNab02777(ENSA Antibody) at dilution of 1:50



mouse brain tissue were subjected to SDS PAGE followed by western blot with FNab02777(ENSA antibody) at dilution of 1:300