

## EME1 antibody

### Product Information

Catalog No.:	FNab02752
Size:	100µg
Form:	liquid
Purification:	Immunogen affinity purified
Purity:	≥95% as determined by SDS-PAGE
Host:	Rabbit
Clonality:	polyclonal
Clone ID:	None
IsoType:	IgG
Storage:	PBS with 0.02% sodium azide and 50% glycerol pH 7.3, -20°C for 12 months(Avoid repeated freeze / thaw cycles.)

### Background

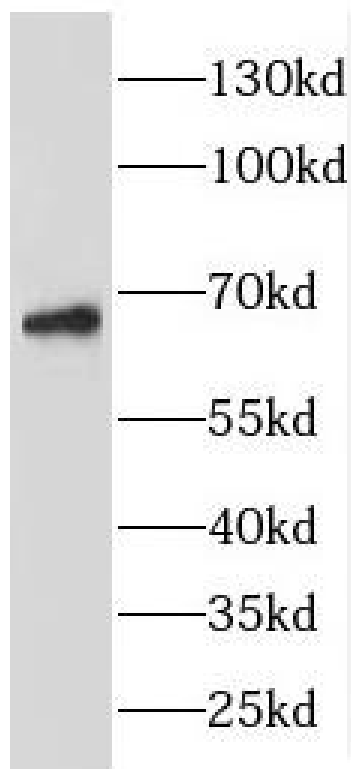
Interacts with MUS81 to form a DNA structure-specific endonuclease with substrate preference for branched DNA structures with a 5'-end at the branch nick. Typical substrates include 3'-flap structures, replication forks and nicked Holliday junctions. May be required in mitosis for the processing of stalled or collapsed replication forks.

### Immunogen information

Immunogen:	essential meiotic endonuclease 1 homolog 1(S. pombe)
Synonyms:	Crossover junction endonuclease EME1 MMS4 homolog (hMMS4) EME1 MMS4
Observed MW:	65 kDa
Uniprot ID :	Q96AY2

### Application

Reactivity:	Human, Mouse, Rat
Tested Application:	ELISA, WB
Recommended dilution:	WB: 1:500-1:2000
Image:	



A375 cells were subjected to SDS PAGE followed by western blot with FNab02752(EME1 antibody) at dilution of 1:500