

EIF4G1 antibody

Product Information

Catalog No.:	FNab02724
Size:	100µg
Form:	liquid
Purification:	Immunogen affinity purified
Purity:	≥95% as determined by SDS-PAGE
Host:	Rabbit
Clonality:	polyclonal
Clone ID:	None
IsoType:	IgG
Storage:	PBS with 0.02% sodium azide and 50% glycerol pH 7.3, -20°C for 12 months (Avoid repeated freeze / thaw cycles.)

Background

The protein encoded by this gene is a component of the multi-subunit protein complex EIF4F. This complex facilitates the recruitment of mRNA to the ribosome, which is a rate-limiting step during the initiation phase of protein synthesis. The recognition of the mRNA cap and the ATP-dependent unwinding of 5'-terminal secondary structure is catalyzed by factors in this complex. The subunit encoded by this gene is a large scaffolding protein that contains binding sites for other members of the EIF4F complex. A domain at its N-terminus can also interact with the poly(A)-binding protein, which may mediate the circularization of mRNA during translation. Alternative splicing results in multiple transcript variants, some of which are derived from alternative promoter usage.

Immunogen information

Immunogen:	eukaryotic translation initiation factor 4 gamma, 1
Synonyms:	Eukaryotic translation initiation factor 4 gamma 1 (eIF-4-gamma 1, eIF-4G 1, eIF-4G1) p220 EIF4G1 EIF4F EIF4G EIF4GI
Observed MW:	230 kDa
Uniprot ID :	Q04637

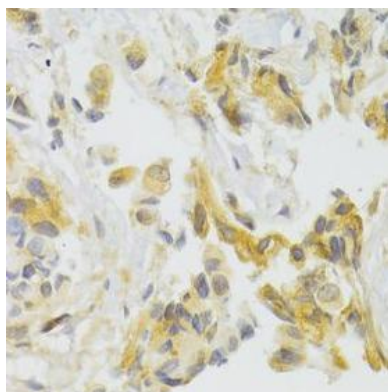
Application

Reactivity:	Human
-------------	-------

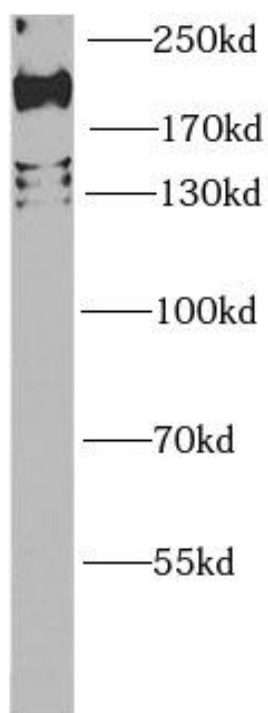
Tested Application: ELISA, WB, IHC, IF

Recommended dilution: WB: 1:500 - 1:2000; IHC: 1:50 - 1:200; IF: 1:50 - 1:200

Image:



Immunohistochemistry of paraffin-embedded human breast cancer using FNab02724(EIF4G1 antibody) at dilution of 1:100



HeLa cells were subjected to SDS PAGE followed by western blot with FNab02724(EIF4G1 antibody) at dilution of 1:1000