

EIF4A2 antibody

Product Information

| | |
|---------------|--|
| Catalog No.: | FNab02717 |
| Size: | 100µg |
| Form: | liquid |
| Purification: | Immunogen affinity purified |
| Purity: | ≥95% as determined by SDS-PAGE |
| Host: | Rabbit |
| Clonality: | polyclonal |
| Clone ID: | None |
| IsoType: | IgG |
| Storage: | PBS with 0.02% sodium azide and 50% glycerol pH 7.3, -20°C for 12 months(Avoid repeated freeze / thaw cycles.) |

Background

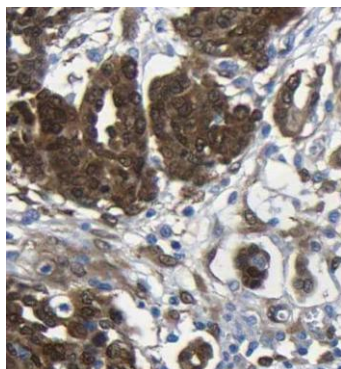
ATP-dependent RNA helicase which is a subunit of the eIF4F complex involved in cap recognition and is required for mRNA binding to ribosome. In the current model of translation initiation, eIF4A unwinds RNA secondary structures in the 5'-UTR of mRNAs which is necessary to allow efficient binding of the small ribosomal subunit, and subsequent scanning for the initiator codon.

Immunogen information

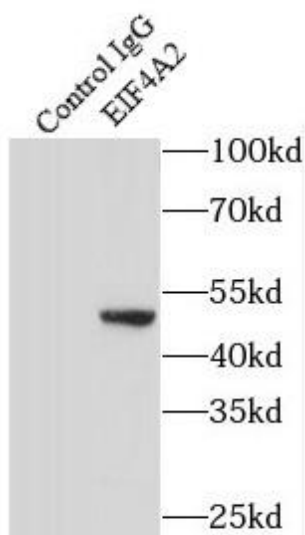
| | |
|--------------|--|
| Immunogen: | eukaryotic translation initiation factor 4A, isoform 2 |
| Synonyms: | Eukaryotic initiation factor 4A-II (eIF-4A-II, eIF4A-II) ATP-dependent RNA helicase eIF4A-2 EIF4A2 DDX2B EIF4F |
| Observed MW: | 47 kDa |
| Uniprot ID : | Q14240 |

Application

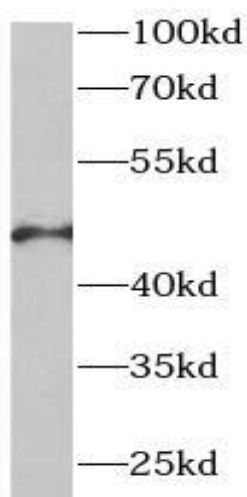
| | |
|-----------------------|---|
| Reactivity: | Human, Mouse, Rat |
| Tested Application: | ELISA, WB, IF, IHC, IP |
| Recommended dilution: | WB: 1:200-1:1000; IP: 1:500-1:1000; IHC: 1:20-1:200 |
| Image: | |



Immunohistochemistry of paraffin-embedded human ovary tumor using FNab02717(EIF4A2 antibody) at dilution of 1:100



IP Result of anti-EIF4A2 (IP:FNab02717, 4ug; Detection:FNab02717 1:500) with Jurkat cells lysate 4000ug.



Jurkat cells were subjected to SDS PAGE followed by western blot with FNab02717(EIF4A2 antibody) at dilution of 1:400