

EHD2 antibody

Product Information

Catalog No.:	FNab02675
Size:	100µg
Form:	liquid
Purification:	Immunogen affinity purified
Purity:	≥95% as determined by SDS-PAGE
Host:	Rabbit
Clonality:	polyclonal
Clone ID:	None
IsoType:	IgG
Storage:	PBS with 0.02% sodium azide and 50% glycerol pH 7.3, -20°C for 12 months(Avoid repeated freeze / thaw cycles.)

Background

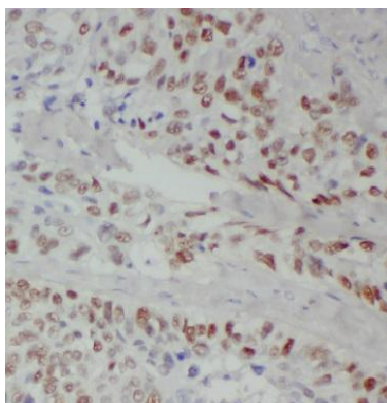
ATP-and membrane-binding protein that controls membrane reorganization/tubulation upon ATP hydrolysis(By similarity). Plays a role in membrane trafficking between the plasma membrane and endosomes(PubMed:17233914). Important for the internalization of GLUT4. Required for fusion of myoblasts to skeletal muscle myotubes. Required for normal translocation of FER1L5 to the plasma membrane(By similarity).

Immunogen information

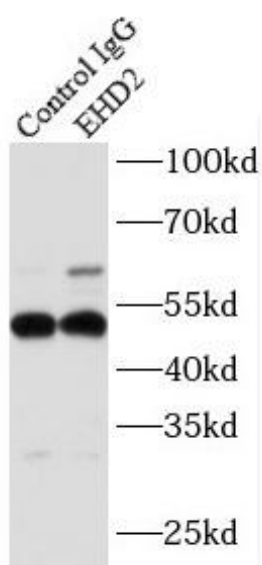
Immunogen:	EH-domain containing 2
Synonyms:	EH domain-containing protein 2 PAST homolog 2 EHD2 PAST2
Observed MW:	61 kDa
Uniprot ID :	Q9NZN4

Application

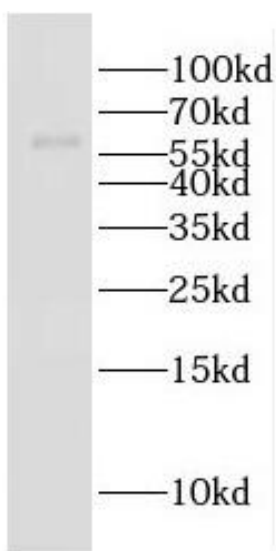
Reactivity:	Human, Mouse, Rat
Tested Application:	ELISA, WB, IHC, IP
Recommended dilution:	WB: 1:500-1:2000; IP: 1:200-1:1000; IHC: 1:20-1:200
Image:	



Immunohistochemistry of paraffin-embedded human lung cancer using FNab02675(EHD2 antibody) at dilution of 1:50



IP Result of anti-EHD2 (IP:FNab02675, 4ug; Detection:FNab02675 1:800) with mouse heart tissue lysate 4000ug.



human heart tissue were subjected to SDS PAGE followed by western blot with FNab02675(EHD2 antibody) at dilution of 1:400