

EHD1 antibody

Product Information

Catalog No.:	FNab02674
Size:	100µg
Form:	liquid
Purification:	Immunogen affinity purified
Purity:	≥95% as determined by SDS-PAGE
Host:	Rabbit
Clonality:	polyclonal
Clone ID:	None
IsoType:	IgG
Storage:	PBS with 0.02% sodium azide and 50% glycerol pH 7.3, -20°C for 12 months(Avoid repeated freeze / thaw cycles.)

Background

ATP-and membrane-binding protein that controls membrane reorganization/tubulation upon ATP hydrolysis. In vitro causes vesiculation of endocytic membranes(PubMed:24019528). Acts in early endocytic membrane fusion and membrane trafficking of recycling endosomes(PubMed:15020713, PubMed:17233914, PubMed:20801876). Recruited to endosomal membranes upon nerve growth factor stimulation, indirectly regulates neurite outgrowth(By similarity). Plays a role in myoblast fusion(By similarity). Involved in the unidirectional retrograde dendritic transport of endocytosed BACE1 and in efficient sorting of BACE1 to axons implicating a function in neuronal APP processing(By similarity). Plays a role in the formation of the ciliary vesicle(CV), an early step in cilium biogenesis. Proposed to be required for the fusion of distal appendage vesicles(DAVs) to form the CV by recruiting SNARE complex component SNAP29. Is required for recruitment of transition zone proteins CEP290, RPGRIP1L, TMEM67 and B9D2, and of IFT20 following DAV reorganization before Rab8-dependent ciliary membrane extension. Required for the loss of CCP110 from the mother centriole essential for the maturation of the basal body during ciliogenesis(PubMed:25686250).

Immunogen information

Immunogen:	EH-domain containing 1
Synonyms:	EH domain-containing protein 1 PAST homolog 1 (hPAST1) Testilin EHD1 PAST PAST1
Observed MW:	61 kDa
Uniprot ID :	Q9H4M9

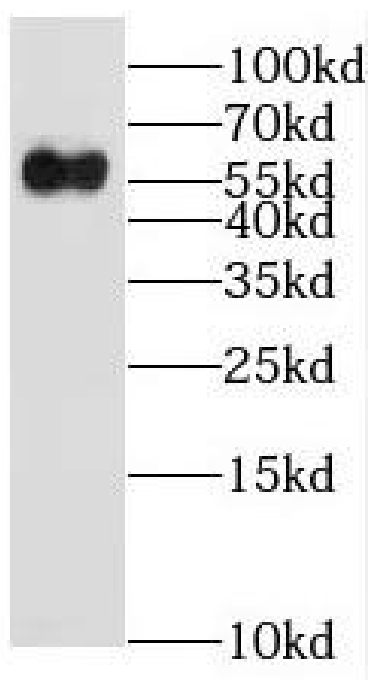
Application

Reactivity: Human, Mouse, Rat

Tested Application: ELISA, WB, IF

Recommended dilution: WB: 1:500-1:2000; IF: 1:20-1:200

Image:



HeLa cells were subjected to SDS PAGE followed by western blot with FNab02674(EHD1 antibody) at dilution of 1:2000