

KIF11 antibody

Product Information

Catalog No.:	FNab02665
Size:	100µg
Form:	liquid
Purification:	Immunogen affinity purified
Purity:	≥95% as determined by SDS-PAGE
Host:	Rabbit
Clonality:	polyclonal
Clone ID:	None
IsoType:	IgG
Storage:	PBS with 0.02% sodium azide and 50% glycerol pH 7.3, -20°C for 12 months(Avoid repeated freeze / thaw cycles.)

Background

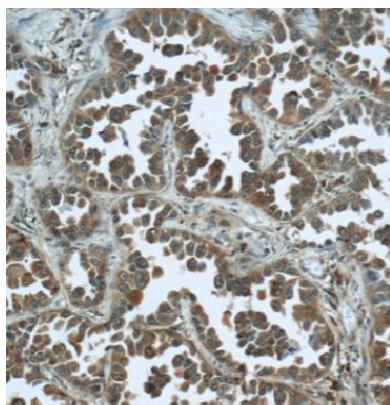
None

Immunogen information

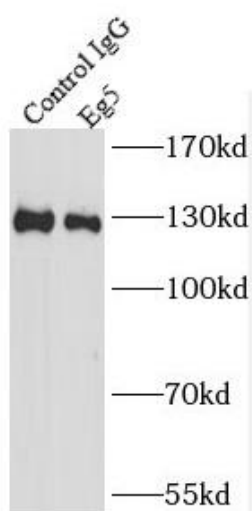
Immunogen:	kinesin family member 11
Synonyms:	Kinesin-like protein KIF11 Kinesin-like protein 1 Kinesin-like spindle protein HKSP Kinesin-related motor protein Eg5 Thyroid receptor-interacting protein 5 (TR-interacting protein 5, TRIP-5) KIF11 EG5 KNSL1 TRIP5
Observed MW:	120-130 kDa
Uniprot ID :	P52732

Application

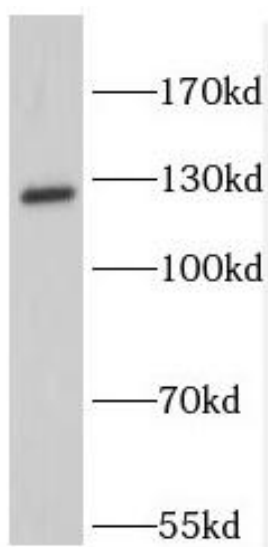
Reactivity:	Human
Tested Application:	ELISA, WB, IHC, IP
Recommended dilution:	WB: 1:500-1:2000; IP: 1:200-1:1000; IHC: 1:20-1:200
Image:	



Immunohistochemistry of paraffin-embedded human lung cancer tissue slide using FNab02665(KIF11 Antibody) at dilution of 1:50



IP Result of anti-Eg5 (IP:FNab02665, 4ug; Detection:FNab02665 1:1000) with Raji cells lysate 2000ug.



PC-13 cells were subjected to SDS PAGE followed by western blot with FNab02665(KIF11 Antibody) at dilution of 1:1000