

## SLC1A2 antibody

### Product Information

Catalog No.:	FNab02605
Size:	100µg
Form:	liquid
Purification:	Immunogen affinity purified
Purity:	≥95% as determined by SDS-PAGE
Host:	Rabbit
Clonality:	polyclonal
Clone ID:	None
IsoType:	IgG
Storage:	PBS with 0.02% sodium azide and 50% glycerol pH 7.3, -20°C for 12 months(Avoid repeated freeze / thaw cycles.)

### Background

EAAT2 (also known as GLT-1), is encoded by SLC1A2 and is a glutamate transporter which can clear the majority of extracellular glutamate in brain and prevent brain seizures. Three isoforms of EAAT2 exist due to the alternative splicing. In addition to the 65-70 kDa monomer form, 120-140 kDa dimer of EAAT2 can also be observed on SDS-PAGE. (PMID: 22114258)

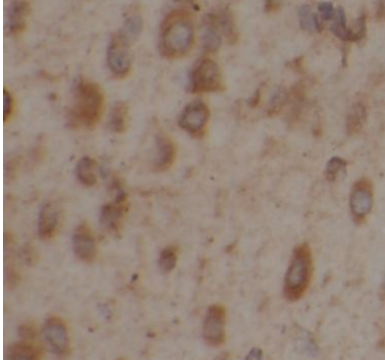
### Immunogen information

Immunogen:	solute carrier family 1(glial high affinity glutamate transporter), member 2
Synonyms:	Excitatory amino acid transporter 2 Glutamate/aspartate transporter II Sodium-dependent glutamate/aspartate transporter 2 Solute carrier family 1 member 2 SLC1A2 EAAT2 GLT1
Observed MW:	60-70 kDa, 120 kDa
Uniprot ID :	P43004

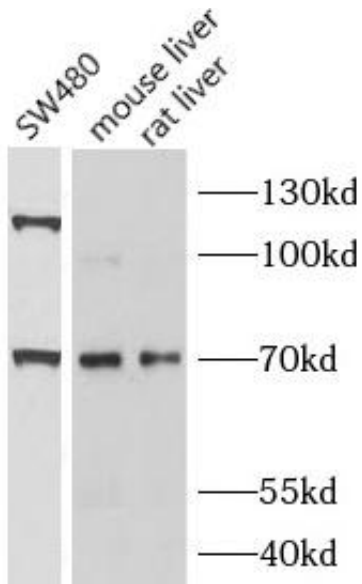
### Application

Reactivity:	Human, Mouse, Rat
Tested Application:	ELISA, WB, IHC
Recommended dilution:	WB: 1:500-1:2000; IHC: 1:20-1:200

Image:



Immunohistochemistry of paraffin-embedded human brain using FNab02605(SLC1A2 antibody) at dilution of 1:50



SW480 cells were subjected to SDS PAGE followed by western blot with FNab02605(SLC1A2 antibody) at dilution of 1:1000