

E2F1 antibody

Product Information

Catalog No.:	FNab02600
Size:	100µg
Form:	liquid
Purification:	Immunogen affinity purified
Purity:	≥95% as determined by SDS-PAGE
Host:	Rabbit
Clonality:	polyclonal
Clone ID:	None
IsoType:	IgG
Storage:	PBS with 0.02% sodium azide and 50% glycerol pH 7.3, -20°C for 12 months(Avoid repeated freeze / thaw cycles.)

Background

Transcription activator that binds DNA cooperatively with DP proteins through the E2 recognition site, 5'-TTTC[CG]CGC-3' found in the promoter region of a number of genes whose products are involved in cell cycle regulation or in DNA replication. The DRTF1/E2F complex functions in the control of cell-cycle progression from G1 to S phase. E2F1 binds preferentially RB1 in a cell-cycle dependent manner. It can mediate both cell proliferation and TP53/p53-dependent apoptosis. Blocks adipocyte differentiation by binding to specific promoters repressing CEBPA binding to its target gene promoters(PubMed:20176812).

Immunogen information

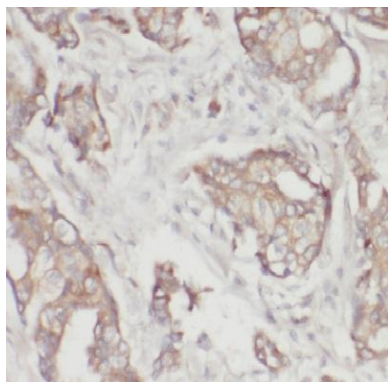
Immunogen:	E2F transcription factor 1
Synonyms:	Transcription factor E2F1 (E2F-1) PBR3 Retinoblastoma-associated protein 1 (RBAP-1) Retinoblastoma-binding protein 3 (RBBP-3) pRB-binding protein E2F-1 E2F1 RBBP3
Observed MW:	55 kDa
Uniprot ID :	Q01094

Application

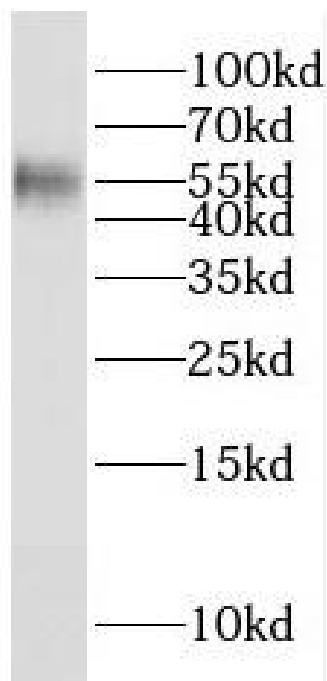
Reactivity:	Human, Mouse, Rat
Tested Application:	ELISA, IHC, WB

Recommended dilution: WB: 1:500-1:2000; IHC: 1:20-1:200

Image:



Immunohistochemistry of paraffin-embedded human breast cancer using FNab02600(E2F1 antibody) at dilution of 1:50



mouse brain tissue were subjected to SDS PAGE followed by western blot with FNab02600(E2F1 Antibody) at dilution of 1:300