

## DVL2 antibody

### Product Information

Catalog No.:	FNab02573
Size:	100µg
Form:	liquid
Purification:	Immunogen affinity purified
Purity:	≥95% as determined by SDS-PAGE
Host:	Rabbit
Clonality:	polyclonal
Clone ID:	None
IsoType:	IgG
Storage:	PBS with 0.02% sodium azide and 50% glycerol pH 7.3, -20°C for 12 months(Avoid repeated freeze / thaw cycles.)

### Background

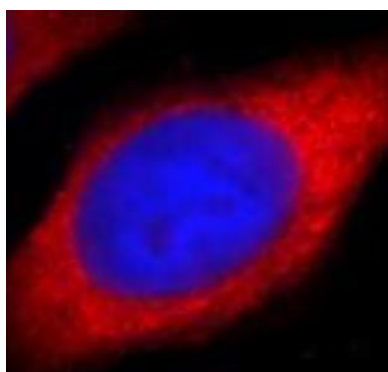
Participates in Wnt signaling by binding to the cytoplasmic C-terminus of frizzled family members and transducing the Wnt signal to down-stream effectors. Promotes internalization and degradation of frizzled proteins upon Wnt signaling. Plays a role both in canonical and non-canonical Wnt signaling. Plays a role in the signal transduction pathways mediated by multiple Wnt genes(By similarity).

### Immunogen information

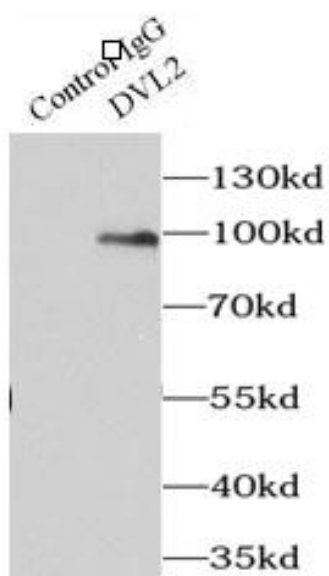
Immunogen:	dishevelled, dsh homolog 2
Synonyms:	Segment polarity protein dishevelled homolog DVL-2 (Dishevelled-2) DSH homolog 2 DVL2
Observed MW:	90 kDa
Uniprot ID :	O14641

### Application

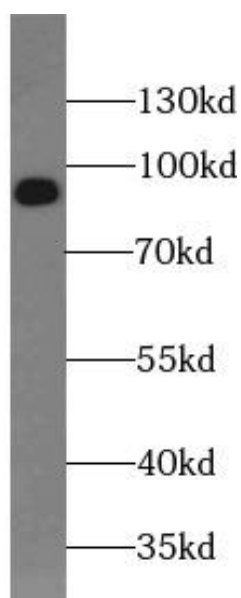
Reactivity:	Human, Mouse
Tested Application:	ELISA, WB, IF, IP
Recommended dilution:	WB: 1:500-1:2000; IP: 1:500-1:2000; IF: 1:20-1:200
Image:	



Immunofluorescent analysis of HepG2 cells using FNab02573 (DVL2 antibody) at dilution of 1:50 and Rhodamine-Goat anti-Rabbit IgG



IP Result of anti-DVL2 (IP: FNab02573, 4ug; Detection: FNab02573 1:1000) with MCF-7 cells lysate 3200ug.



HepG2 cells were subjected to SDS PAGE followed by western blot with FNab02573( DVL2 Antibody) at dilution of 1:1000