

## UTP20 antibody

### Product Information

|               |  |
|---------------|--|
| Catalog No.:  | FNab02539  |
| Size:         | 100µg  |
| Form:         | liquid   |
| Purification: | Immunogen affinity purified  |
| Purity:       | ≥95% as determined by SDS-PAGE   |
| Host:         | Rabbit   |
| Clonality:    | polyclonal   |
| Clone ID:     | None   |
| IsoType:      | IgG  |
| Storage:      | PBS with 0.02% sodium azide and 50% glycerol pH 7.3, -20°C for 12 months(Avoid repeated freeze / thaw cycles.) |

### Background

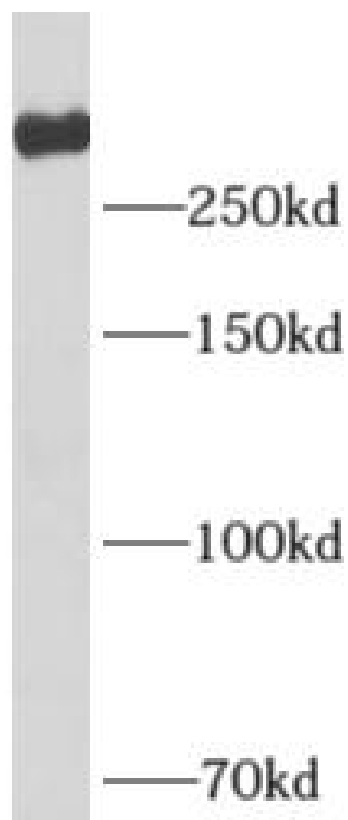
None

### Immunogen information

|              |  |
|--------------|--|
| Immunogen:   | UTP20, small subunit(SSU) processome component, homolog  |
| Synonyms:    | Small subunit processome component 20 homolog Down-regulated in metastasis protein Novel nucleolar protein 73 (NNP73) Protein Key-1A6 UTP20 DRIM |
| Observed MW: | 310 kDa  |
| Uniprot ID : | O75691   |

### Application

|                       |                                  |
|-----------------------|----------------------------------|
| Reactivity:           | Human, Mouse, Rat                |
| Tested Application:   | ELISA, WB, IF                    |
| Recommended dilution: | WB: 1:500-1:2000; IF: 1:20-1:200 |
| Image:                |                                  |



HeLa cells were subjected to SDS PAGE followed by western blot with FNab02539(DRIM antibody) at dilution of 1:1000