

## DRG1 antibody

### Product Information

|               |  |
|---------------|--|
| Catalog No.:  | FNab02537  |
| Size:         | 100µg  |
| Form:         | liquid   |
| Purification: | Immunogen affinity purified  |
| Purity:       | ≥95% as determined by SDS-PAGE   |
| Host:         | Rabbit   |
| Clonality:    | polyclonal   |
| Clone ID:     | None   |
| IsoType:      | IgG  |
| Storage:      | PBS with 0.02% sodium azide and 50% glycerol pH 7.3, -20°C for 12 months(Avoid repeated freeze / thaw cycles.) |

### Background

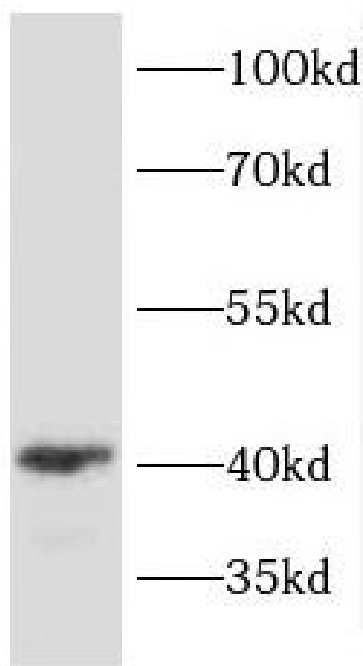
Critical regulator of cell growth under specific conditions. Implicated in differentiation and cell cycle arrest.

### Immunogen information

|              |  |
|--------------|--|
| Immunogen:   | developmentally regulated GTP binding protein 1  |
| Synonyms:    | Developmentally-regulated GTP-binding protein 1 (DRG-1) Neural precursor cell expressed developmentally down-regulated protein 3 (NEDD-3) Translation factor GTPase DRG1 (TRAFAC GTPase DRG1) DRG1 NEDD3 |
| Observed MW: | 41 kDa   |
| Uniprot ID : | Q9Y295   |

### Application

|                       |                                  |
|-----------------------|----------------------------------|
| Reactivity:           | Human, Mouse, Rat                |
| Tested Application:   | ELISA, WB, IF                    |
| Recommended dilution: | WB: 1:500-1:2000; IF: 1:20-1:200 |
| Image:                |                                  |



K-562 cells were subjected to SDS PAGE followed by western blot with FNab02537(DRG1 antibody) at dilution of 1:4000