

## DPM1 antibody

### Product Information

Catalog No.:	FNab02518
Size:	100µg
Form:	liquid
Purification:	Immunogen affinity purified
Purity:	≥95% as determined by SDS-PAGE
Host:	Rabbit
Clonality:	polyclonal
Clone ID:	None
IsoType:	IgG
Storage:	PBS with 0.02% sodium azide and 50% glycerol pH 7.3, -20°C for 12 months(Avoid repeated freeze / thaw cycles.)

### Background

Transfers mannose from GDP-mannose to dolichol monophosphate to form dolichol phosphate mannose(Dol-P-Man) which is the mannosyl donor in pathways leading to N-glycosylation, glycosyl phosphatidylinositol membrane anchoring, and O-mannosylation of proteins; catalytic subunit of the dolichol-phosphate mannose(DPM) synthase complex.

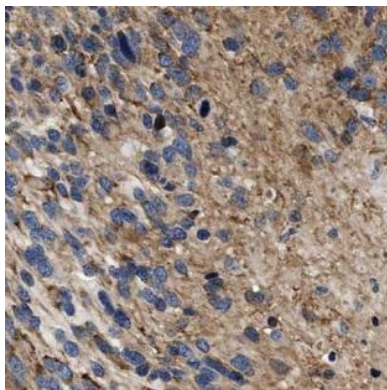
### Immunogen information

Immunogen:	dolichyl-phosphate mannosyltransferase polypeptide 1, catalytic subunit
Synonyms:	Dolichol-phosphate mannosyltransferase subunit 1 Dolichol-phosphate mannose synthase subunit 1 (DPM synthase subunit 1) Dolichyl-phosphate beta-D-mannosyltransferase subunit 1 Mannose-P-dolichol synthase subunit 1 (MPD synthase subunit 1) DPM1
Observed MW:	27-32 kDa
Uniprot ID :	O60762

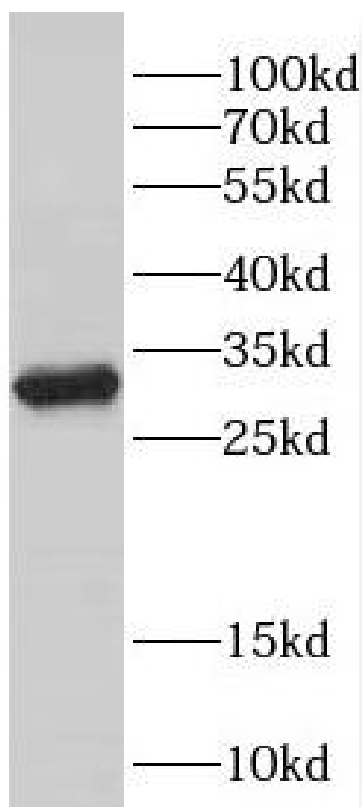
### Application

Reactivity:	Human, Mouse
Tested Application:	ELISA, WB, IHC
Recommended dilution:	WB: 1:500-1:2000; IHC: 1:20-1:200

Image:



Immunohistochemistry of paraffin-embedded human gliomas using FNab02518(DPM1 antibody) at dilution of 1:50



mouse pancreas tissue were subjected to SDS PAGE followed by western blot with FNab02518(DPM1 antibody) at dilution of 1:500