

## DOC2B antibody

### Product Information

Catalog No.:	FNab02491
Size:	100µg
Form:	liquid
Purification:	Immunogen affinity purified
Purity:	≥95% as determined by SDS-PAGE
Host:	Rabbit
Clonality:	polyclonal
Clone ID:	None
IsoType:	IgG
Storage:	PBS with 0.02% sodium azide and 50% glycerol pH 7.3, -20°C for 12 months(Avoid repeated freeze / thaw cycles.)

### Background

Calcium sensor which positively regulates SNARE-dependent fusion of vesicles with membranes. Binds phospholipids in a calcium-dependent manner and may act at the priming stage of fusion by modifying membrane curvature to stimulate fusion. Involved in calcium-triggered exocytosis in chromaffin cells and calcium-dependent spontaneous release of neurotransmitter in absence of action potentials in neuronal cells. Involved both in glucose-stimulated insulin secretion in pancreatic cells and insulin-dependent GLUT4 transport to the plasma membrane in adipocytes(By similarity).

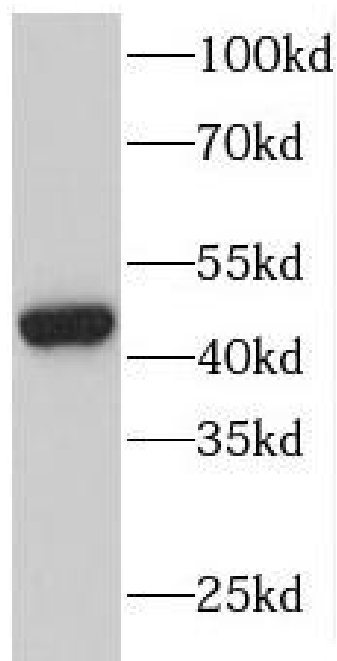
### Immunogen information

Immunogen:	double C2-like domains, beta
Synonyms:	Double C2-like domain-containing protein beta (Doc2-beta) DOC2B DOC2BL
Observed MW:	46 kDa
Uniprot ID :	Q14184

### Application

Reactivity:	Human, Mouse, Rat
Tested Application:	ELISA, WB, IF
Recommended dilution:	WB: 1:500-1:2000; IF: 1:20-1:200

Image:



mouse kidney tissue were subjected to SDS PAGE followed by western blot with FNab02491(DOC2B antibody) at dilution of 1:600