

DLEU1 antibody

Product Information

Catalog No.:	FNab02408
Size:	100µg
Form:	liquid
Purification:	Immunogen affinity purified
Purity:	≥95% as determined by SDS-PAGE
Host:	Rabbit
Clonality:	polyclonal
Clone ID:	None
IsoType:	IgG
Storage:	PBS with 0.02% sodium azide and 50% glycerol pH 7.3, -20°C for 12 months(Avoid repeated freeze / thaw cycles.)

Background

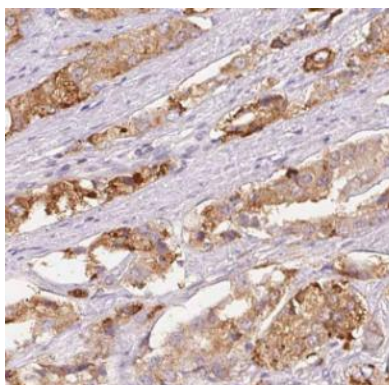
May act as a tumor suppressor.

Immunogen information

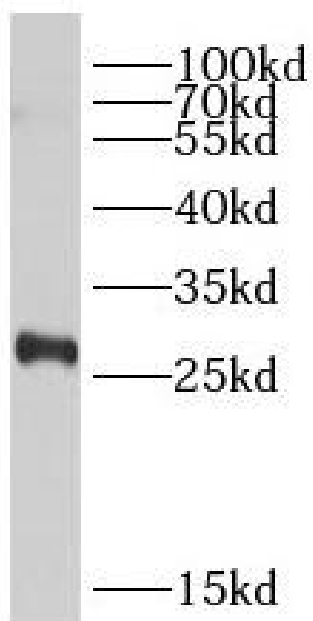
Immunogen:	deleted in lymphocytic leukemia 1(non-protein coding)
Synonyms:	Leukemia-associated protein 1 Deleted in lymphocytic leukemia 1 HBV X-transactivated gene 6 protein HBV XAg-transactivated protein 6 DLEU1 LEU1 XTP6
Observed MW:	27-30 kDa
Uniprot ID :	O43261

Application

Reactivity:	Human
Tested Application:	ELISA, WB, IHC
Recommended dilution:	WB: 1:500-1:2000; IHC: 1:20-1:200
Image:	



Immunohistochemistry of paraffin-embedded human prostate cancer using FNab02408(DLEU1 antibody) at dilution of 1:50



K-562 cells were subjected to SDS PAGE followed by western blot with FNab02408(DLEU1 antibody) at dilution of 1:500