

DLEC1 antibody

Product Information

Catalog No.:	FNab02407
Size:	100µg
Form:	liquid
Purification:	Immunogen affinity purified
Purity:	≥95% as determined by SDS-PAGE
Host:	Rabbit
Clonality:	polyclonal
Clone ID:	None
IsoType:	IgG
Storage:	PBS with 0.02% sodium azide and 50% glycerol pH 7.3, -20°C for 12 months(Avoid repeated freeze / thaw cycles.)

Background

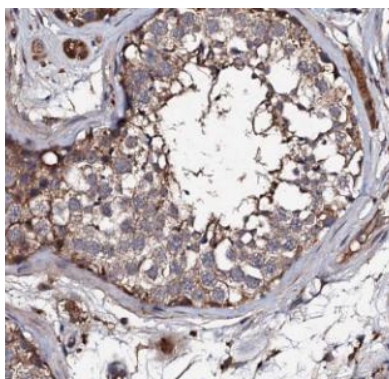
May act as a tumor suppressor by inhibiting cell proliferation.

Immunogen information

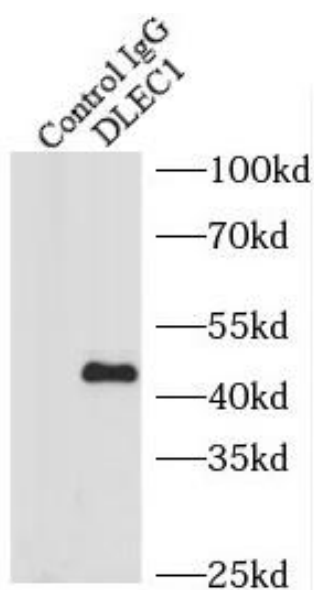
Immunogen:	deleted in lung and esophageal cancer 1
Synonyms:	Deleted in lung and esophageal cancer protein 1 Deleted in lung cancer protein 1 (DLC-1) DLEC1 DLC1
Observed MW:	80-90 kDa, 46 kDa
Uniprot ID :	Q9Y238

Application

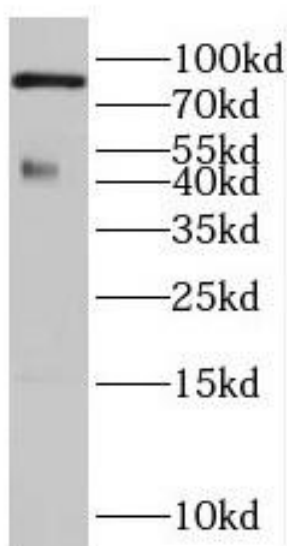
Reactivity:	Human, Mouse
Tested Application:	ELISA, WB, IHC, IF, IP
Recommended dilution:	WB: 1:500-1:2000; IP: 1:200-1:1000; IHC: 1:20-1:200; IF: 1:20-1:200
Image:	



Immunohistochemistry of paraffin-embedded human testis using FNab02407(DLEC1 antibody) at dilution of 1:50



IP Result of anti-DLEC1 (IP:FNab02407, 4ug; Detection:FNab02407 1:300) with PC-3 cells lysate 1100ug.



human testis tissue were subjected to SDS PAGE followed by western blot with FNab02407(DLEC1 antibody) at dilution of 1:300