

DLD antibody

Product Information

Catalog No.:	FNab02406
Size:	100µg
Form:	liquid
Purification:	Immunogen affinity purified
Purity:	≥95% as determined by SDS-PAGE
Host:	Rabbit
Clonality:	polyclonal
Clone ID:	None
IsoType:	IgG
Storage:	PBS with 0.02% sodium azide and 50% glycerol pH 7.3, -20°C for 12 months (Avoid repeated freeze / thaw cycles.)

Background

This gene encodes a member of the class-I pyridine nucleotide-disulfide oxidoreductase family. The encoded protein has been identified as a moonlighting protein based on its ability to perform mechanistically distinct functions. In homodimeric form, the encoded protein functions as a dehydrogenase and is found in several multi-enzyme complexes that regulate energy metabolism. However, as a monomer, this protein can function as a protease. Mutations in this gene have been identified in patients with E3-deficient maple syrup urine disease and lipoamide dehydrogenase deficiency. Alternative splicing results in multiple transcript variants.

Immunogen information

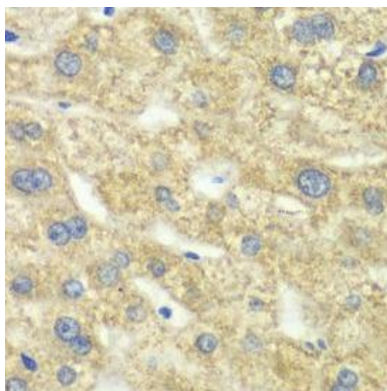
Immunogen:	dihydrolipoamide dehydrogenase
Synonyms:	Dihydrolipoyl dehydrogenase, mitochondrial Dihydrolipoamide dehydrogenase Glycine cleavage system L protein DLD GCSL LAD PHE3
Observed MW:	54 kDa
Uniprot ID :	P09622

Application

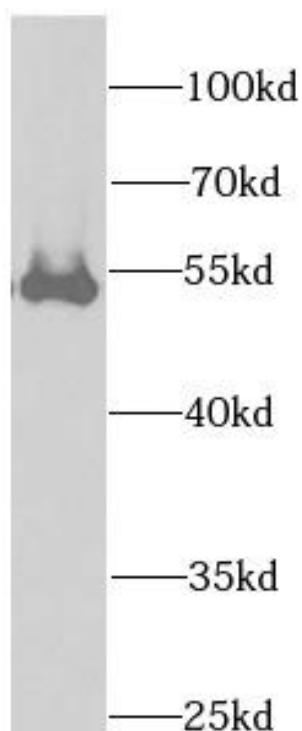
Reactivity:	Human, Mouse
Tested Application:	ELISA, WB, IHC, IF

Recommended dilution: WB: 1:500 - 1:2000; IHC: 1:50 - 1:200; IF: 1:50 - 1:200

Image:



Immunohistochemistry of paraffin-embedded human liver injury using FNab02406(DLD antibody) at dilution of 1:100



human liver tissue were subjected to SDS PAGE followed by western blot with FNab02406(DLD antibody) at dilution of 1:1000