

## SLC6A3 antibody

### Product Information

|               |  |
|---------------|--|
| Catalog No.:  | FNab02247  |
| Size:         | 100µg  |
| Form:         | liquid   |
| Purification: | Immunogen affinity purified  |
| Purity:       | ≥95% as determined by SDS-PAGE   |
| Host:         | Rabbit   |
| Clonality:    | polyclonal   |
| Clone ID:     | None   |
| IsoType:      | IgG  |
| Storage:      | PBS with 0.02% sodium azide and 50% glycerol pH 7.3, -20°C for 12 months(Avoid repeated freeze / thaw cycles.) |

### Background

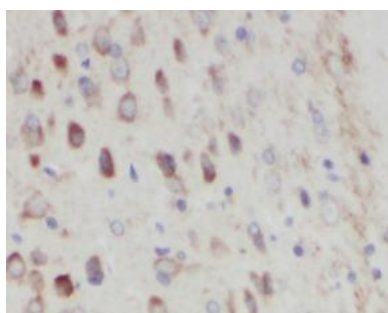
Amine transporter. Terminates the action of dopamine by its high affinity sodium-dependent reuptake into presynaptic terminals.

### Immunogen information

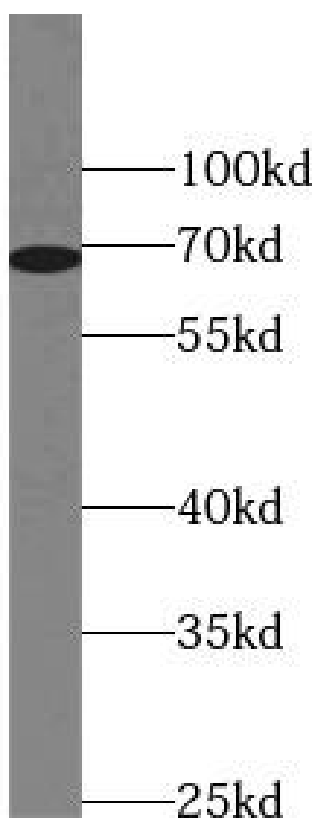
|              |  |
|--------------|--|
| Immunogen:   | solute carrier family 6(neurotransmitter transporter, dopamine), member 3                                |
| Synonyms:    | Sodium-dependent dopamine transporter (DA transporter, DAT) Solute carrier family 6 member 3 SLC6A3 DAT1 |
| Observed MW: | 68 kDa   |
| Uniprot ID : | Q01959   |

### Application

|                       |                                   |
|-----------------------|-----------------------------------|
| Reactivity:           | Human, Mouse, Rat                 |
| Tested Application:   | ELISA, IHC, WB                    |
| Recommended dilution: | WB: 1:500-1:1000; IHC: 1:20-1:200 |
| Image:                |                                   |



Immunohistochemistry of paraffin-embedded mouse brain tissue slide using FNab02247(SLC6A3 Antibody) at dilution of 1:50



rat brain tissue were subjected to SDS PAGE followed by western blot with FNab02247(SLC6A3 Antibody) at dilution of 1:600