

## SPECC1L antibody

### Product Information

Catalog No.:	FNab02224
Size:	100µg
Form:	liquid
Purification:	Immunogen affinity purified
Purity:	≥95% as determined by SDS-PAGE
Host:	Rabbit
Clonality:	polyclonal
Clone ID:	None
IsoType:	IgG
Storage:	PBS with 0.02% sodium azide and 50% glycerol pH 7.3, -20°C for 12 months(Avoid repeated freeze / thaw cycles.)

### Background

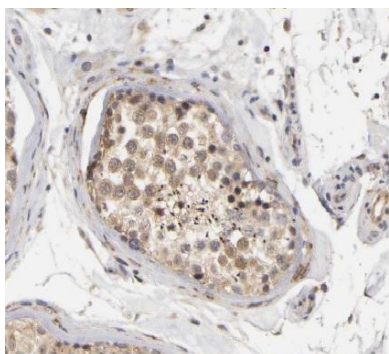
None

### Immunogen information

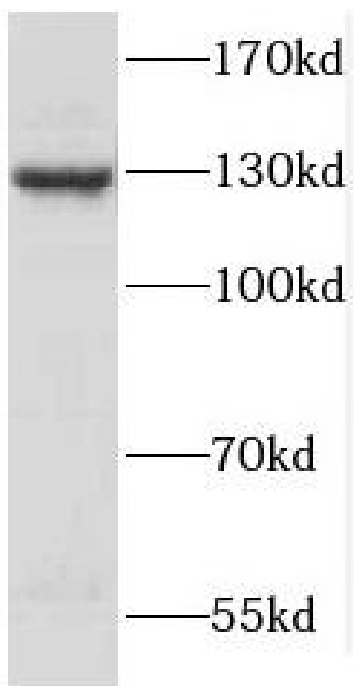
Immunogen:	cytospin A
Synonyms:	Cytospin-A Renal carcinoma antigen NY-REN-22 Sperm antigen with calponin homology and coiled-coil domains 1-like (SPECC1-like protein) SPECC1L CYTSA KIAA0376
Observed MW:	130 kDa
Uniprot ID :	Q69YQ0

### Application

Reactivity:	Human, Mouse
Tested Application:	ELISA, WB, IF, IHC
Recommended dilution:	WB: 1:500-1:2000; IHC: 1:20-1:200; IF: 1:20-1:200
Image:	



Immunohistochemistry of paraffin-embedded human testis tissue slide using FNab02224(CYTSA Antibody) at dilution of 1:50



NIH/3T3 cells were subjected to SDS PAGE followed by western blot with FNab02224(CYTSA Antibody) at dilution of 1:600