

## KRT6A-specific antibody

### Product Information

Catalog No.:	FNab02216
Size:	100µg
Form:	liquid
Purification:	Immunogen affinity purified
Purity:	≥95% as determined by SDS-PAGE
Host:	Rabbit
Clonality:	polyclonal
Clone ID:	None
IsoType:	IgG
Storage:	PBS with 0.02% sodium azide and 50% glycerol pH 7.3, -20°C for 12 months(Avoid repeated freeze / thaw cycles.)

### Background

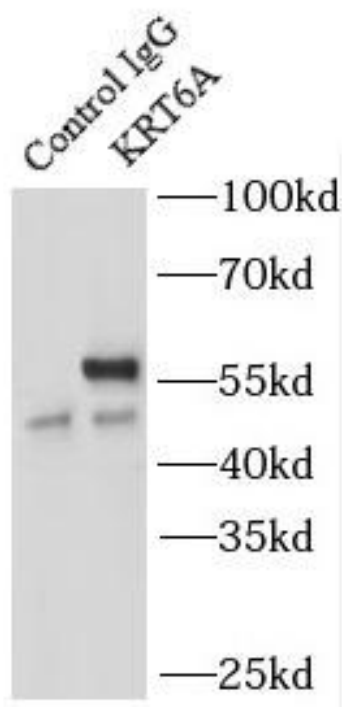
None

### Immunogen information

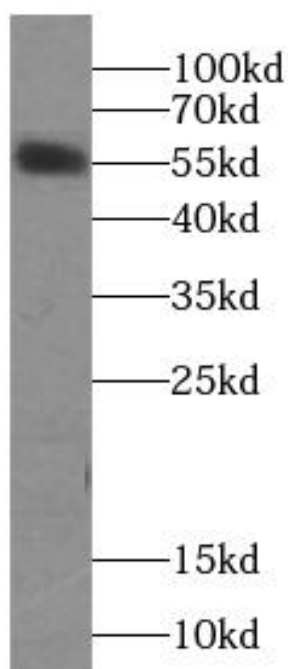
Immunogen:	keratin 6A
Synonyms:	Keratin, type II cytoskeletal 6A Cytokeratin-6A (CK-6A) Cytokeratin-6D (CK-6D) Keratin-6A (K6A) Type-II keratin Kb6 KRT6A K6A KRT6D
Observed MW:	56 kDa
Uniprot ID :	P02538

### Application

Reactivity:	Human, Mouse
Tested Application:	ELISA, WB, IP
Recommended dilution:	WB: 1:500-1:1000; IP: 1:200-1:1000
Image:	



IP Result of anti-Cytokeratin 6A-specific  
(IP:FNab02216, 4ug; Detection:FNab02216 1:300)  
with HeLa cells lysate 520ug.



A431 cells were subjected to SDS PAGE followed  
by western blot with FNab02216(Cytokeratin 6A-  
specific antibody) at dilution of 1:600