

KRT6A antibody

Product Information

Catalog No.:	FNab02215
Size:	100µg
Form:	liquid
Purification:	Immunogen affinity purified
Purity:	≥95% as determined by SDS-PAGE
Host:	Rabbit
Clonality:	polyclonal
Clone ID:	None
IsoType:	IgG
Storage:	PBS with 0.02% sodium azide and 50% glycerol pH 7.3, -20°C for 12 months(Avoid repeated freeze / thaw cycles.)

Background

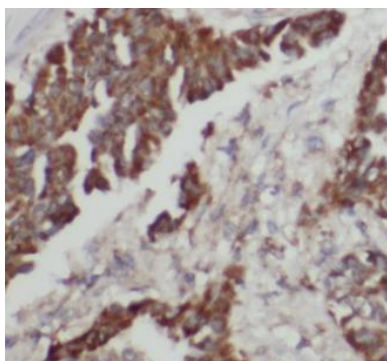
None

Immunogen information

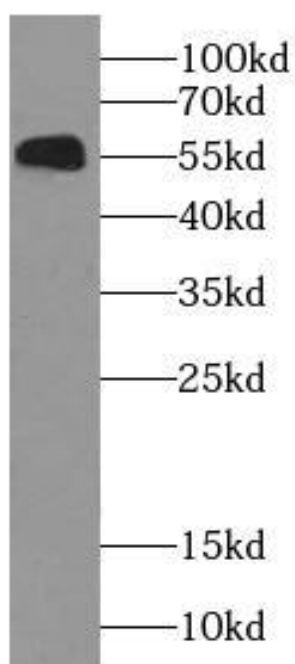
Immunogen:	keratin 6A
Synonyms:	Keratin, type II cytoskeletal 6A Cytokeratin-6A (CK-6A) Cytokeratin-6D (CK-6D) Keratin-6A (K6A) Type-II keratin Kb6 KRT6A K6A KRT6D
Observed MW:	56 kDa
Uniprot ID :	P02538

Application

Reactivity:	Human, Mouse, Rat
Tested Application:	ELISA, WB, IF, IHC
Recommended dilution:	WB: 1:5000-1:10000; IHC: 1:20-1:200; IF: 1:20-1:200
Image:	



Immunohistochemistry of paraffin-embedded human lung cancer tissue slide using FNab02215(KRT6A Antibody) at dilution of 1:200



A431 cells were subjected to SDS PAGE followed by western blot with FNab02215(KRT6A antibody) at dilution of 1:10000