

## KRT20 antibody

### Product Information

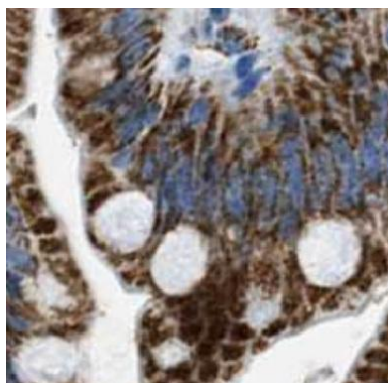
Catalog No.:	FNab02213
Size:	100µg
Form:	liquid
Purification:	Protein A+G purification
Purity:	≥95% as determined by SDS-PAGE
Host:	Mouse
Clonality:	monoclonal
Clone ID:	5F9
IsoType:	IgG2a
Storage:	PBS with 0.02% sodium azide and 50% glycerol pH 7.3, -20°C for 12 months(Avoid repeated freeze / thaw cycles.)

### Immunogen information

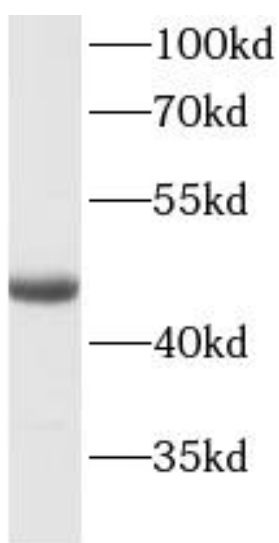
Immunogen:	keratin 20
Synonyms:	Keratin, type I cytoskeletal 20 Cytokeratin-20 (CK-20) Keratin-20 (K20) Protein IT KRT20
Observed MW:	46 kDa
Uniprot ID :	P35900

### Application

Reactivity:	Human
Tested Application:	ELISA, WB, IHC
Recommended dilution:	WB: 1:500-1:2000; IHC: 1:1000-1:10000
Image:	



Immunohistochemistry of paraffin-embedded human colon tissue slide using FNab02213(KRT20 Antibody) at dilution of 1:4000



COLO 320 cells were subjected to SDS PAGE followed by western blot with FNab02213(KRT20 antibody) at dilution of 1:1000