

## KRT20 antibody

### Product Information

Catalog No.:	FNab02212
Size:	100µg
Form:	liquid
Purification:	Immunogen affinity purified
Purity:	≥95% as determined by SDS-PAGE
Host:	Rabbit
Clonality:	polyclonal
Clone ID:	None
IsoType:	IgG
Storage:	PBS with 0.02% sodium azide and 50% glycerol pH 7.3, -20°C for 12 months(Avoid repeated freeze / thaw cycles.)

### Background

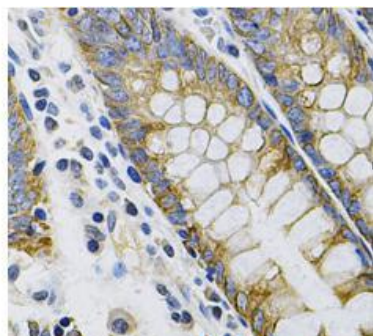
None

### Immunogen information

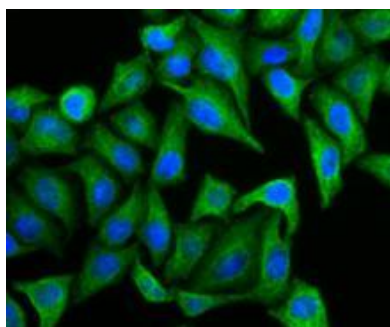
Immunogen:	keratin 20
Synonyms:	Keratin, type I cytoskeletal 20 Cytokeratin-20 (CK-20) Keratin-20 (K20) Protein IT KRT20
Observed MW:	46 kDa
Uniprot ID :	P35900

### Application

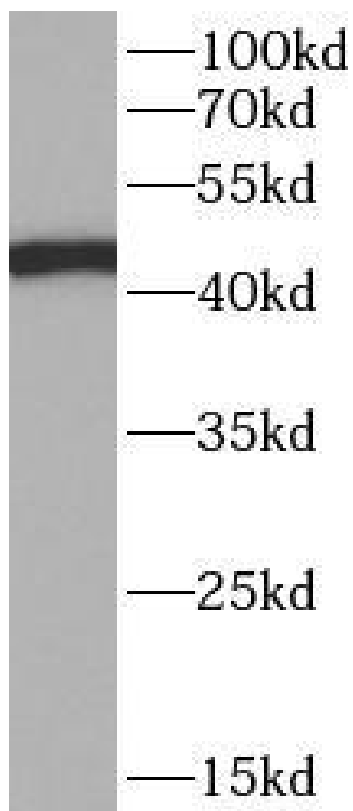
Reactivity:	Human, Mouse, Rat
Tested Application:	ELISA, WB, IF, IHC
Recommended dilution:	WB: 1:500-1:2000; IHC: 1:20-1:200; IF: 1:50-1:200
Image:	



Immunohistochemistry of paraffin-embedded human colon tissue slide using FNab02212(KRT20 Antibody) at dilution of 1:100



Immunofluorescent analysis of HeLa cells using FNab02212(KRT20 Antibody) at dilution of 1:100 and Alexa Fluor 488-conjugated Goat Anti-Rabbit IgG(H+L)



Hela cells were subjected to SDS PAGE followed by western blot with FNab02212(KRT20 antibody) at dilution of 1:1000