

## KRT1-specific antibody

### Product Information

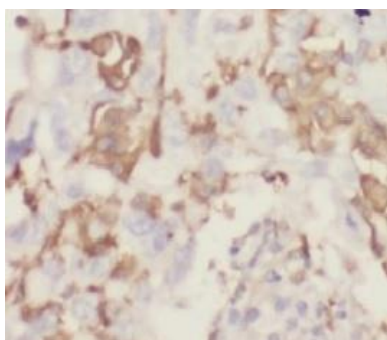
Catalog No.:	FNab02211
Size:	100µg
Form:	liquid
Purification:	Immunogen affinity purified
Purity:	≥95% as determined by SDS-PAGE
Host:	Rabbit
Clonality:	polyclonal
IsoType:	IgG
Storage:	PBS with 0.02% sodium azide and 50% glycerol pH 7.3, -20°C for 12 months(Avoid repeated freeze / thaw cycles.)

### Immunogen information

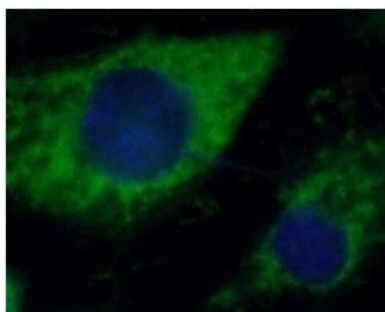
Immunogen:	keratin 1
Synonyms:	Keratin, type II cytoskeletal 1 67 kDa cytokeratin Cytokeratin-1 (CK-1) Hair alpha protein Keratin-1 (K1) Type-II keratin Kb1 KRT1 KRTA
Observed MW:	67 kDa
Uniprot ID :	P04264

### Application

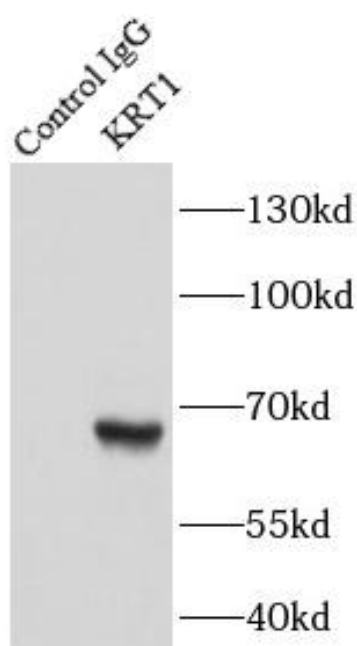
Reactivity:	Human, Mouse
Tested Application:	ELISA, IP, IF, WB, IHC
Recommended dilution:	WB: 1:500-1:5000; IP: 1:200-1:2000; IHC: 1:20-1:200; IF: 1:20-1:200
Image:	



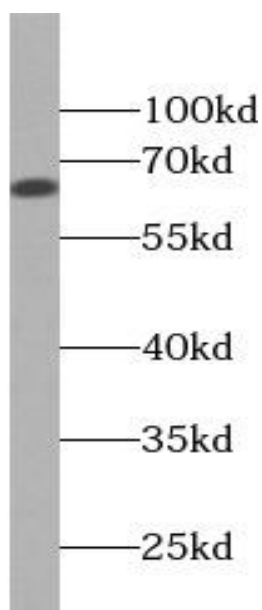
Immunohistochemistry of paraffin-embedded human lung cancer using FNab02211(KRT1-specific antibody) at dilution of 1:50



Immunofluorescent analysis of A431 cells using FNab02211 ( KRT1-specific Antibody) at dilution of 1:50 and Alexa Fluor 488-conjugated AffiniPure Goat Anti-Rabbit IgG(H+L)



IP Result of anti-KRT1-specific (IP: FNab02211, 3ug; Detection: FNab02211 1:500) with A431 cells lysate 3500ug.



mouse skin tissue were subjected to SDS PAGE followed by western blot with FNab02211(KRT1-specific Antibody) at dilution of 1:1000