

KRT18 antibody

Product Information

Catalog No.:	FNab02206
Size:	100µg
Form:	liquid
Purification:	Protein A+G purification
Purity:	≥95% as determined by SDS-PAGE
Host:	Mouse
Clonality:	monoclonal
Clone ID:	6E3
IsoType:	IgG2a
Storage:	PBS with 0.02% sodium azide and 50% glycerol pH 7.3, -20°C for 12 months(Avoid repeated freeze / thaw cycles.)

Background

Keratins are a large family of proteins that form the intermediate filament cytoskeleton of epithelial cells, which are classified into two major sequence types. Type I keratins are a group of acidic intermediate filament proteins, including K9–K23, and the hair keratins Ha1–Ha8. Type II keratins are the basic or neutral counterparts to the acidic type I keratins, including K1–K8, and the hair keratins, Hb1–Hb6. KRT18, also named as CYK18, PIG46 and K18, is the most commonly found members of the intermediate filament gene family. KRT18 is a type I keratin which is found primarily in non squamous epithelia and is present in a majority of adenocarcinomas and ductal carcinomas but not in squamous cell carcinomas.

Immunogen information

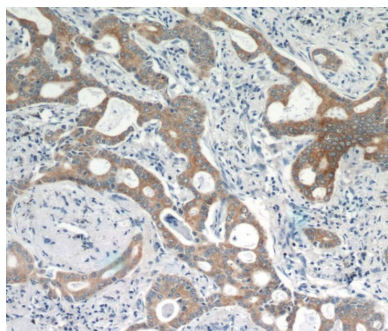
Immunogen:	keratin 18
Synonyms:	Keratin, type I cytoskeletal 18 Cell proliferation-inducing gene 46 protein Cytokeratin-18 (CK-18) Keratin-18 (K18) KRT18 CYK18
Observed MW:	48 kDa
Uniprot ID :	P05783

Application

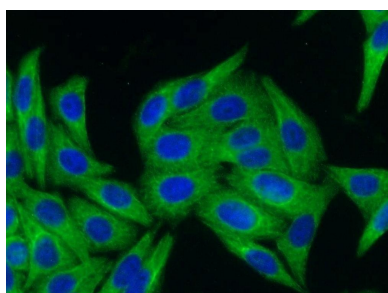
Reactivity:	Human, Mouse, Rat
Tested Application:	ELISA, WB, FC, IF, IHC

Recommended dilution: WB: 1:5000-1:30000; IHC: 1:500-1:1000; IF: 1:100-1:300

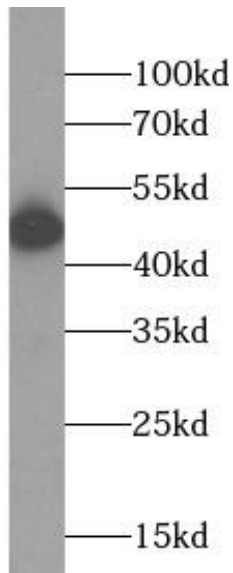
Image:



Immunohistochemistry of paraffin-embedded human lung cancer tissue slide using FNab02206(KRT18 Antibody) at dilution of 1:200



Immunofluorescent analysis of HepG2 cells using FNab02206 (KRT18 Antibody) at dilution of 1:25 and Alexa Fluor 594-conjugated AffiniPure Goat Anti-Mouse IgG(H+L)



HeLa cells were subjected to SDS PAGE followed by western blot with FNab02206(KRT18 Antibody) at dilution of 1:20000