

KRT16 antibody

Product Information

Catalog No.:	FNab02200
Size:	100µg
Form:	liquid
Purification:	Immunogen affinity purified
Purity:	≥95% as determined by SDS-PAGE
Host:	Rabbit
Clonality:	polyclonal
Clone ID:	None
IsoType:	IgG
Storage:	PBS with 0.02% sodium azide and 50% glycerol pH 7.3, -20°C for 12 months(Avoid repeated freeze / thaw cycles.)

Background

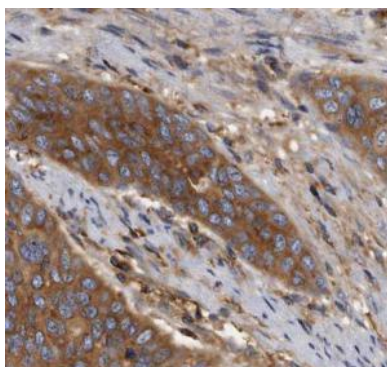
None

Immunogen information

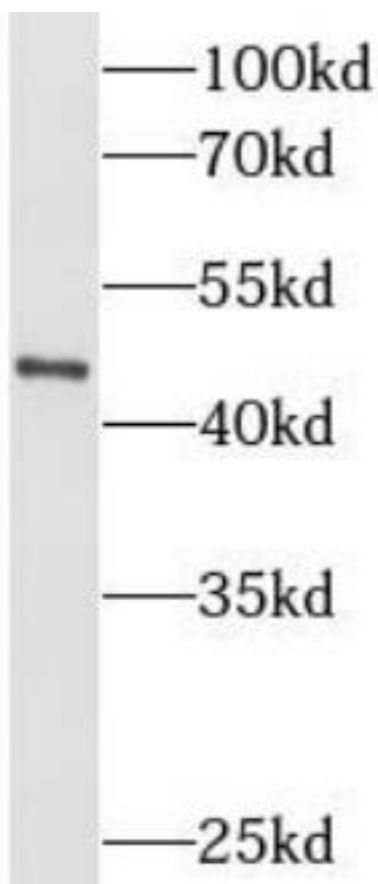
Immunogen:	keratin 16
Synonyms:	Keratin, type I cytoskeletal 16 Cytokeratin-16 (CK-16) Keratin-16 (K16) KRT16 KRT16A
Observed MW:	48 kDa
Uniprot ID :	P08779

Application

Reactivity:	Human, Rat
Tested Application:	ELISA, WB, IHC
Recommended dilution:	WB: 1:500 - 1:2000; IHC: 1:50 - 1:200
Image:	



Immunohistochemistry of paraffin-embedded human cervical cancer tissue slide using FNab02200(KRT16 Antibody) at dilution of 1:200



HeLa cells were subjected to SDS PAGE followed by western blot with FNab02200(KRT16 antibody) at dilution of 1:1000