

CYP2F1 antibody

Product Information

Catalog No.:	FNab02160
Size:	100µg
Form:	liquid
Purification:	Immunogen affinity purified
Purity:	≥95% as determined by SDS-PAGE
Host:	Rabbit
Clonality:	polyclonal
Clone ID:	None
IsoType:	IgG
Storage:	PBS with 0.02% sodium azide and 50% glycerol pH 7.3, -20°C for 12 months (Avoid repeated freeze / thaw cycles.)

Background

This gene encodes a member of the cytochrome P450 superfamily of enzymes. The cytochrome P450 proteins are monooxygenases which catalyze many reactions involved in drug metabolism and synthesis of cholesterol, steroids and other lipids. This protein localizes to the endoplasmic reticulum and is known to dehydrogenate 3-methylindole, an endogenous toxin derived from the fermentation of tryptophan, as well as xenobiotic substrates such as naphthalene and ethoxycoumarin. This gene is part of a large cluster of cytochrome P450 genes from the CYP2A, CYP2B and CYP2F subfamilies on chromosome 19q.

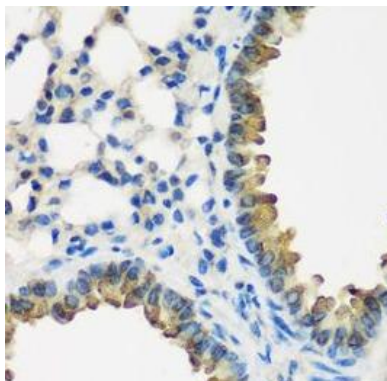
Immunogen information

Immunogen:	cytochrome P450, family 2, subfamily F, polypeptide 1
Synonyms:	Cytochrome P450 2F1 CYPIIF1 CYP2F1
Observed MW:	46 kDa
Uniprot ID :	P24903

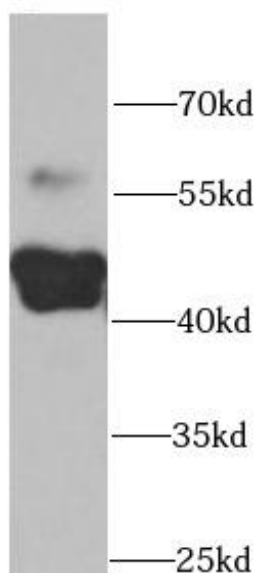
Application

Reactivity:	Human, Mouse, Rat
Tested Application:	ELISA, WB, IHC
Recommended dilution:	WB: 1:500 - 1:2000; IHC: 1:50 - 1:200

Image:



Immunohistochemistry of paraffin-embedded mouse lung using FNab02160(CYP2F1 antibody) at dilution of 1:100



mouse liver tissue were subjected to SDS PAGE followed by western blot with FNab02160(CYP2F1 antibody) at dilution of 1:1000