

CYP1A1 antibody

Product Information

Catalog No.:	FNab02147
Size:	100µg
Form:	liquid
Purification:	Immunogen affinity purified
Purity:	≥95% as determined by SDS-PAGE
Host:	Rabbit
Clonality:	polyclonal
Clone ID:	None
IsoType:	IgG
Storage:	PBS with 0.02% sodium azide and 50% glycerol pH 7.3, -20°C for 12 months (Avoid repeated freeze / thaw cycles.)

Background

This gene, CYP1A1, encodes a member of the cytochrome P450 superfamily of enzymes. The cytochrome P450 proteins are monooxygenases which catalyze many reactions involved in drug metabolism and synthesis of cholesterol, steroids and other lipids. This protein localizes to the endoplasmic reticulum and its expression is induced by some polycyclic aromatic hydrocarbons (PAHs), some of which are found in cigarette smoke. The enzyme's endogenous substrate is unknown; however, it is able to metabolize some PAHs to carcinogenic intermediates. The gene has been associated with lung cancer risk. A related family member, CYP1A2, is located approximately 25 kb away from CYP1A1 on chromosome 15. Alternative splicing results in multiple transcript variants encoding distinct isoforms.

Immunogen information

Immunogen:	cytochrome P450, family 1, subfamily A, polypeptide 1
Synonyms:	Cytochrome P450 1A1 (CYPIA1) Cytochrome P450 form 6 Cytochrome P450-C Cytochrome P450-P1 Hydroperoxy icosatetraenoate dehydratase CYP1A1
Observed MW:	63 kDa
Uniprot ID :	P04798

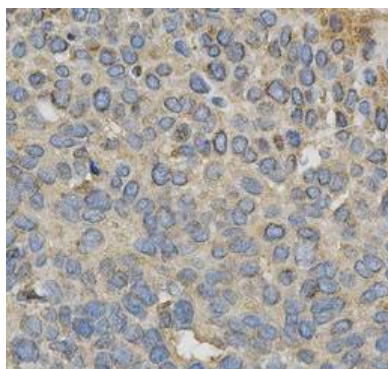
Application

Reactivity:	Human, Mouse, Rat
-------------	-------------------

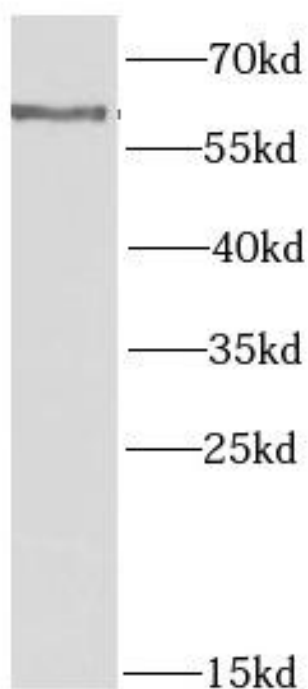
Tested Application: ELISA, WB, IHC

Recommended dilution: WB: 1:500 - 1:2000; IHC: 1:50 - 1:200

Image:



Immunohistochemistry of paraffin-embedded human esophageal cancer using FNab02147(CYP1A1 antibody) at dilution of 1:100



mouse cerebellum tissue were subjected to SDS PAGE followed by western blot with FNab02147(CYP1A1 antibody) at dilution of 1:1000