

## CCND1 antibody

### Product Information

Catalog No.:	FNab02124
Size:	100µg
Form:	liquid
Purification:	Protein A+G purification
Purity:	≥95% as determined by SDS-PAGE
Host:	Mouse
Clonality:	monoclonal
Clone ID:	8E8
IsoType:	IgG2a
Storage:	PBS with 0.02% sodium azide and 50% glycerol pH 7.3, -20°C for 12 months(Avoid repeated freeze / thaw cycles.)

### Background

CCND1(cyclin D1), also known as PRAD1 or BCL1, belongs to the highly conserved cyclin family, whose members are characterized by a dramatic periodicity in protein abundance throughout the cell cycle. CCND1 forms a complex with and functions as a regulatory subunit of CDK4 or CDK6, whose activity is required for cell cycle G1/S transition. The CCND1 gene, located on 11q13 has been reported to be overexpressed in mantle cell lymphoma(MCL) due to the chromosomal translocation. CCND1 has been shown to interact with tumor suppressor protein Rb and the expression of this gene is regulated positively by Rb. Over-expression of CCND1 is known to correlate with the early onset of cancer and risk of tumor progression and metastasis.

### Immunogen information

Immunogen:	cyclin D1
Synonyms:	G1/S-specific cyclin-D1 B-cell lymphoma 1 protein (BCL-1) BCL-1 oncogene PRAD1 oncogene CCND1 BCL1 PRAD1
Observed MW:	36 kDa
Uniprot ID :	P24385

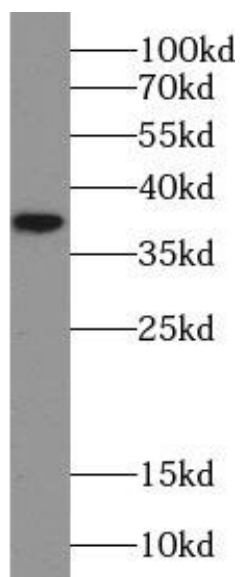
### Application

Reactivity:	Human, Mouse
-------------	--------------

Tested Application: ELISA, WB

Recommended dilution: WB: 1:2000-1:10000

Image:



HepG2 cells were subjected to SDS PAGE followed by western blot with FNab02124(Cyclin D1 Antibody) at dilution of 1:10000