

CCNB2 antibody

Product Information

Catalog No.:	FNab02123
Size:	100µg
Form:	liquid
Purification:	Immunogen affinity purified
Purity:	≥95% as determined by SDS-PAGE
Host:	Rabbit
Clonality:	polyclonal
Clone ID:	None
IsoType:	IgG
Storage:	PBS with 0.02% sodium azide and 50% glycerol pH 7.3, -20°C for 12 months (Avoid repeated freeze / thaw cycles.)

Background

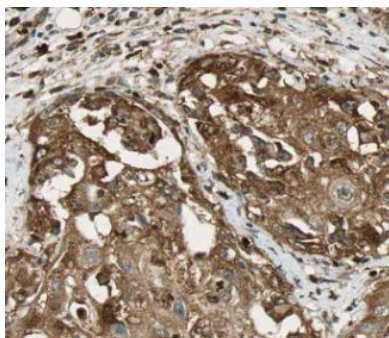
Cyclin B2 is a member of the cyclin family, specifically the B-type cyclins. The B-type cyclins, B1 and B2, associate with p34cdc2 and are essential components of the cell cycle regulatory machinery. B1 and B2 differ in their subcellular localization. Cyclin B1 co-localizes with microtubules, whereas cyclin B2 is primarily associated with the Golgi region. Cyclin B2 also binds to transforming growth factor beta RII and thus cyclin B2/cdc2 may play a key role in transforming growth factor beta-mediated cell cycle control.

Immunogen information

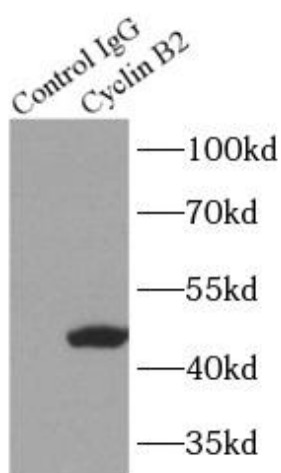
Immunogen:	cyclin B2
Synonyms:	G2/mitotic-specific cyclin-B2 CCNB2
Observed MW:	50 kDa
Uniprot ID :	O95067

Application

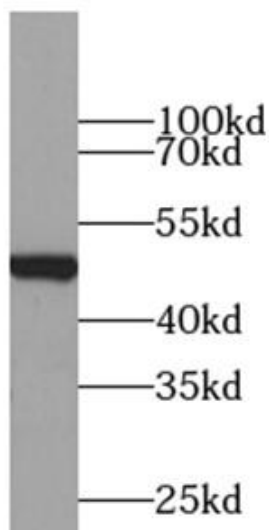
Reactivity:	Human, Mouse, Rat
Tested Application:	ELISA, WB, IHC, IP
Recommended dilution:	WB: 1:500 - 1:2000; IHC: 1:100 - 1:200; IP: 1:500-1:1000
Image:	



Immunohistochemistry of paraffin-embedded human cervical cancer tissue slide using FNab02123(CCNB2 Antibody) at dilution of 1:200



IP Result of anti-CCNB2 (IP: FNab02123, 4ug; Detection: FNab02123 1:1000) with A431 cells lysate 2000ug.



A431 cells were subjected to SDS PAGE followed by western blot with FNab02123(CCNB2 antibody) at dilution of 1:1000