

## CCNB1 antibody

### Product Information

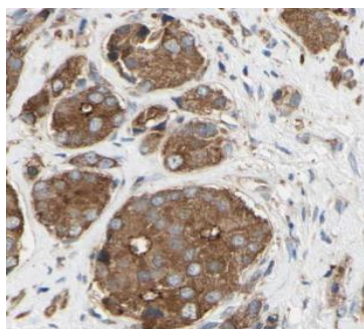
Catalog No.:	FNab02122
Size:	100µg
Form:	liquid
Purification:	Immunogen affinity purified
Purity:	≥95% as determined by SDS-PAGE
Host:	Rabbit
Clonality:	polyclonal
Clone ID:	None
IsoType:	IgG
Storage:	PBS with 0.02% sodium azide and 50% glycerol pH 7.3, -20°C for 12 months(Avoid repeated freeze / thaw cycles.)

### Immunogen information

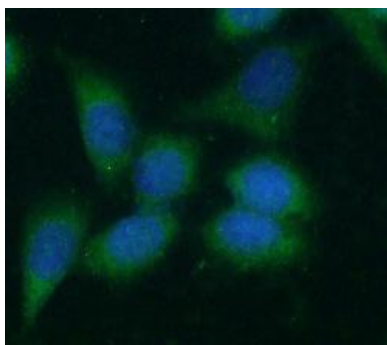
Immunogen:	cyclin B1
Synonyms:	G2/mitotic-specific cyclin-B1 CCNB1 CCNB
Observed MW:	55 kDa
Uniprot ID :	P14635

### Application

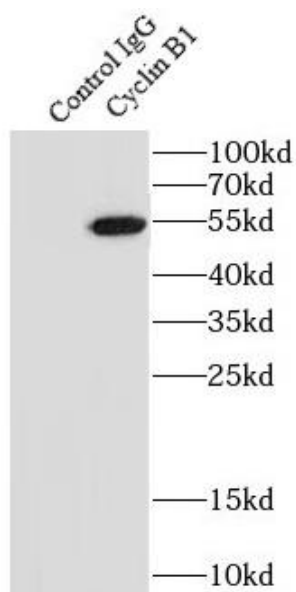
Reactivity:	Human, Mouse, Rat
Tested Application:	ELISA, WB, IF, IHC, IP
Recommended dilution:	WB: 1:500-1:5000; IP: 1:200-1:2000; IHC: 1:20-1:200; IF: 1:20-1:200
Image:	



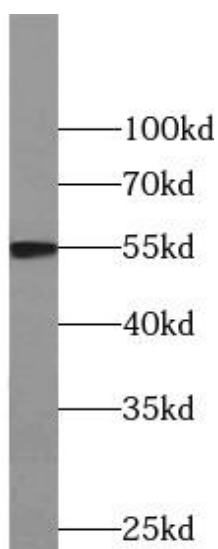
Immunohistochemistry of paraffin-embedded human prostate cancer tissue slide using FNab02122(Cyclin B1 Antibody) at dilution of 1:50. heat mediated antigen retrieved with Tris-EDTA buffer(pH9).



Immunofluorescent analysis of HeLa cells using FNab02122( Cyclin B1 Antibody) at dilution of 1:50 and Alexa Fluor 488-conjugated Goat Anti-Rabbit IgG(H+L)



IP Result of anti-Cyclin B1 (IP:FNab02122, 4ug; Detection:FNab02122 1:500) with HeLa cells lysate 1200ug.



HeLa cells were subjected to SDS PAGE followed by western blot with FNab02122(CCNB1 antibody) at dilution of 1:500