

CSRP1 antibody

Product Information

Catalog No.:	FNab02029
Size:	100µg
Form:	liquid
Purification:	Immunogen affinity purified
Purity:	≥95% as determined by SDS-PAGE
Host:	Rabbit
Clonality:	polyclonal
Clone ID:	None
IsoType:	IgG
Storage:	PBS with 0.02% sodium azide and 50% glycerol pH 7.3, -20°C for 12 months(Avoid repeated freeze / thaw cycles.)

Background

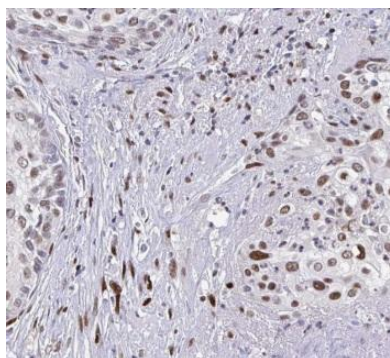
Could play a role in neuronal development.

Immunogen information

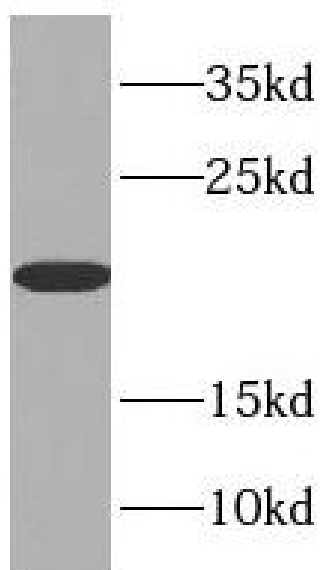
Immunogen:	cysteine and glycine-rich protein 1
Synonyms:	Cysteine and glycine-rich protein 1 Cysteine-rich protein 1 (CRP, CRP1) Epididymis luminal protein 141 (HEL-141) CSRP1 CSRP CYRP
Observed MW:	21 kDa
Uniprot ID :	P21291

Application

Reactivity:	Human, Mouse, Rat
Tested Application:	ELISA, WB, IHC
Recommended dilution:	WB: 1:500-1:2000; IHC: 1:20-1:200
Image:	



Immunohistochemistry of paraffin-embedded human cervical cancer using FNab02029(CSRP1 antibody) at dilution of 1:100



human stomach tissue were subjected to SDS PAGE followed by western blot with FNab02029(CSRP1 antibody) at dilution of 1:500