

CSNK2A2 antibody

Product Information

Catalog No.:	FNab02024
Size:	100µg
Form:	liquid
Purification:	Immunogen affinity purified
Purity:	≥95% as determined by SDS-PAGE
Host:	Rabbit
Clonality:	polyclonal
Clone ID:	None
IsoType:	IgG
Storage:	PBS with 0.02% sodium azide and 50% glycerol pH 7.3, -20°C for 12 months (Avoid repeated freeze / thaw cycles.)

Background

Casein kinase I (also designated CKI) and casein kinase II (CKII) compose a family of serine/threonine protein kinases which are present in all eukaryotes examined to date. Casein kinase I family members, which include casein kinase I α , I β , I δ and I ϵ , have been implicated in the control of cytoplasmic and nuclear processes, including DNA replication and repair. CKII is usually expressed as a tetrameric complex consisting of either an $\alpha_2\beta_2$ or an $\alpha\alpha'\beta_2$ structure. The α catalytic subunit is stimulated by the β regulatory subunit, which undergoes autophosphorylation. Casein kinase II activity is high in the cytosol and nucleus of proliferating and differentiating cells. Casein kinase II is known to phosphorylate more than 100 different substrates including nuclear oncoproteins, transcription factors and enzymes involved in DNA metabolism.

Immunogen information

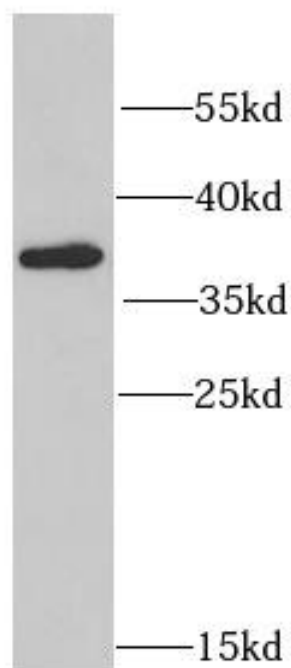
Immunogen:	casein kinase 2, alpha prime polypeptide
Synonyms:	Casein kinase II subunit alpha' (CK II alpha') CSNK2A2 CK2A2
Observed MW:	37 kDa
Uniprot ID :	P19784

Application

Reactivity:	Human, Mouse, Rat
Tested Application:	ELISA, WB, IHC, IF

Recommended dilution: WB: 1:500 - 1:2000; IHC: 1:50 - 1:200; IF: 1:50 - 1:200

Image:



HeLa cells were subjected to SDS PAGE followed by western blot with FNab02024(CSNK2A2 Antibody) at dilution of 1:1000