

CSNK1A1L antibody

Product Information

| | |
|---------------|--|
| Catalog No.: | FNab02021 |
| Size: | 100µg |
| Form: | liquid |
| Purification: | Immunogen affinity purified |
| Purity: | ≥95% as determined by SDS-PAGE |
| Host: | Rabbit |
| Clonality: | polyclonal |
| Clone ID: | None |
| IsoType: | IgG |
| Storage: | PBS with 0.02% sodium azide and 50% glycerol pH 7.3, -20°C for 12 months(Avoid repeated freeze / thaw cycles.) |

Background

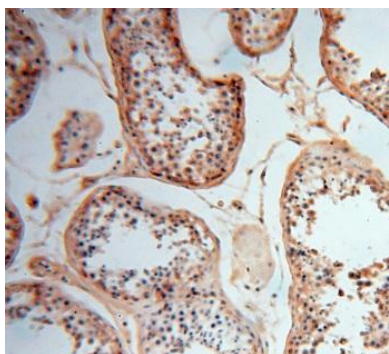
Casein kinases are operationally defined by their preferential utilization of acidic proteins such as caseins as substrates. It can phosphorylate a large number of proteins. Participates in Wnt signaling(By similarity).

Immunogen information

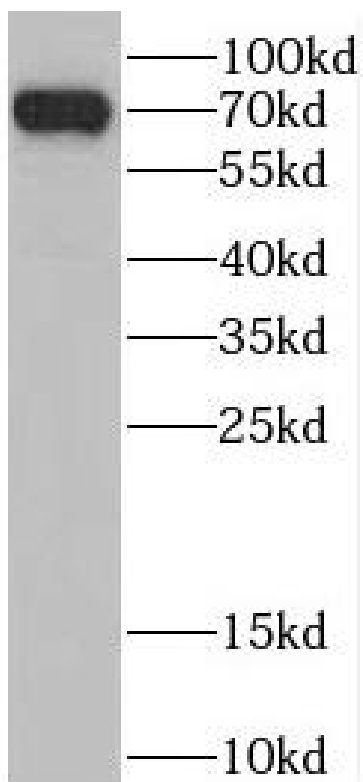
| | |
|--------------|--|
| Immunogen: | casein kinase 1, alpha 1-like |
| Synonyms: | Casein kinase I isoform alpha-like (CKI-alpha-like) CK1 CSNK1A1L |
| Observed MW: | 70 kDa |
| Uniprot ID : | Q8N752 |

Application

| | |
|-----------------------|-----------------------------------|
| Reactivity: | Human, Mouse, Rat |
| Tested Application: | ELISA, WB, IHC |
| Recommended dilution: | WB: 1:500-1:2000; IHC: 1:20-1:200 |
| Image: | |



Immunohistochemistry of paraffin-embedded human testis using FNa02021(CSNK1A1L antibody) at dilution of 1:100



HeLa cells were subjected to SDS PAGE followed by western blot with FNa02021(CSNK1A1L antibody) at dilution of 1:1000